

Product datasheet for **TA315491**

SF3B14 (SF3B6) Rabbit Polyclonal Antibody

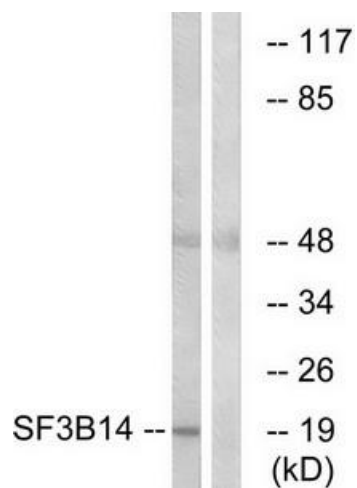
Product data:

Product Type:	Primary Antibodies
Applications:	WB
Recommended Dilution:	WB: 1:500~1:3000, ELISA: 1:40000
Reactivity:	Human, Mouse
Host:	Rabbit
Isotype:	IgG
Clonality:	Polyclonal
Immunogen:	The antiserum was produced against synthesized peptide derived from C-terminal of human SF3B14.
Formulation:	Phosphate buffered saline (without Mg ²⁺ and Ca ²⁺), pH 7.4, 150mM NaCl, 0.02% sodium azide and 50% glycerol.
Concentration:	lot specific
Purification:	The antibody was affinity-purified from rabbit antiserum by affinity-chromatography using epitope-specific immunogen.
Conjugation:	Unconjugated
Storage:	Store at -20°C as received.
Stability:	Stable for 12 months from date of receipt.
Gene Name:	splicing factor 3b subunit 6
Database Link:	NP_057131 Entrez Gene 66055 Mouse Entrez Gene 51639 Human Q9Y3B4
Synonyms:	CGI-110; HSPC175; Ht006; P14; SAP14; SAP14a; SF3B14; SF3B14a
Note:	SF3B14 antibody detects endogenous levels of total SF3B14 protein.
Protein Pathways:	Spliceosome



[View online »](#)

Product images:



Western blot analysis of extracts from HepG2 cells, using SF3B14 antibody. The lane on the right is treated with the synthesized peptide.