

Product datasheet for **TA315490**

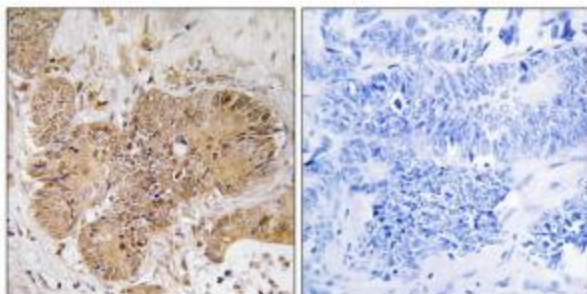
LUC7L2 Rabbit Polyclonal Antibody

Product data:

| | |
|-----------------------|---|
| Product Type: | Primary Antibodies |
| Applications: | IHC |
| Recommended Dilution: | IHC: 1:50~1:100, ELISA: 1:40000 |
| Reactivity: | Human, Mouse, Rat |
| Host: | Rabbit |
| Isotype: | IgG |
| Clonality: | Polyclonal |
| Immunogen: | The antiserum was produced against synthesized peptide derived from internal of human LUC7L2. |
| Formulation: | Phosphate buffered saline (without Mg ²⁺ and Ca ²⁺), pH 7.4, 150mM NaCl, 0.02% sodium azide and 50% glycerol. |
| Concentration: | lot specific |
| Purification: | The antibody was affinity-purified from rabbit antiserum by affinity-chromatography using epitope-specific immunogen. |
| Conjugation: | Unconjugated |
| Storage: | Store at -20°C as received. |
| Stability: | Stable for 12 months from date of receipt. |
| Gene Name: | LUC7-like 2 pre-mRNA splicing factor |
| Database Link: | NP_057103 Entrez Gene 192196 MouseEntrez Gene 312251 RatEntrez Gene 51631 Human Q9Y383 |
| Synonyms: | CGI-59; CGI-74; LUC7B2 |
| Note: | LUC7L2 antibody detects endogenous levels of total LUC7L2 protein. |



[View online »](#)

Product images:

Immunohistochemistry analysis of paraffin-embedded human colon carcinoma tissue using LUC7L2 antibody. The picture on the right is treated with the synthesized peptide.