

Product datasheet for **TA315489**

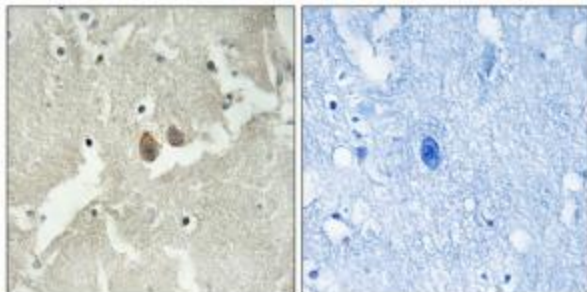
NSG2 (HMP19) Rabbit Polyclonal Antibody

Product data:

Product Type:	Primary Antibodies
Applications:	IHC
Recommended Dilution:	IHC: 1:50~1:100, ELISA: 1:20000
Reactivity:	Human, Mouse
Host:	Rabbit
Isotype:	IgG
Clonality:	Polyclonal
Immunogen:	The antiserum was produced against synthesized peptide derived from internal of human NSG2.
Formulation:	Phosphate buffered saline (without Mg ²⁺ and Ca ²⁺), pH 7.4, 150mM NaCl, 0.02% sodium azide and 50% glycerol.
Concentration:	lot specific
Purification:	The antibody was affinity-purified from rabbit antiserum by affinity-chromatography using epitope-specific immunogen.
Conjugation:	Unconjugated
Storage:	Store at -20°C as received.
Stability:	Stable for 12 months from date of receipt.
Gene Name:	neuronal vesicle trafficking associated 2
Database Link:	NP_057064 Entrez Gene 18197 Mouse Entrez Gene 51617 Human Q9Y328
Synonyms:	HMP19 protein; hypothalamus golgi apparatus expressed 19 kDa protein; NSG2; p19 protein
Note:	NSG2 antibody detects endogenous levels of total NSG2 protein.
Protein Families:	Druggable Genome, Transmembrane



[View online »](#)

Product images:

Immunohistochemistry analysis of paraffin-embedded human brain tissue using NSG2 antibody. The picture on the right is treated with the synthesized peptide.