

Product datasheet for **TA315486**

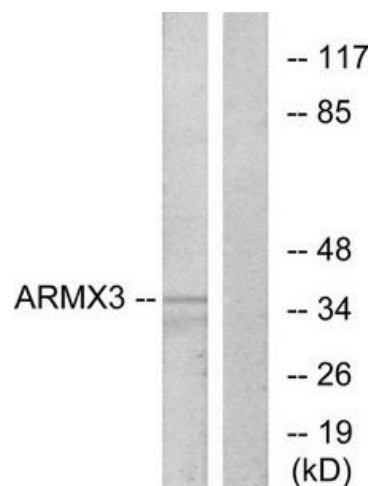
ARMCX3 Rabbit Polyclonal Antibody

Product data:

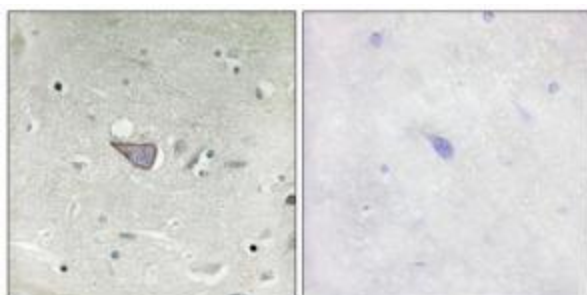
Product Type:	Primary Antibodies
Applications:	IF, IHC, WB
Recommended Dilution:	WB: 1:500~1:3000, IHC: 1:50~1:100, IF: 1:00~1:500, ELISA: 1:1000
Reactivity:	Human, Mouse, Rat
Host:	Rabbit
Isotype:	IgG
Clonality:	Polyclonal
Immunogen:	The antiserum was produced against synthesized peptide derived from internal of human ARMX3.
Formulation:	Phosphate buffered saline (without Mg ²⁺ and Ca ²⁺), pH 7.4, 150mM NaCl, 0.02% sodium azide and 50% glycerol.
Concentration:	lot specific
Purification:	The antibody was affinity-purified from rabbit antiserum by affinity-chromatography using epitope-specific immunogen.
Conjugation:	Unconjugated
Storage:	Store at -20°C as received.
Stability:	Stable for 12 months from date of receipt.
Gene Name:	armadillo repeat containing, X-linked 3
Database Link:	NP_057691 Entrez Gene 71703 Mouse Entrez Gene 367902 Rat Entrez Gene 51566 Human Q9UH62
Synonyms:	ALEX3; dj545K15.2; GASP6
Note:	ARMX3 antibody detects endogenous levels of total ARMX3 protein.
Protein Families:	Transmembrane



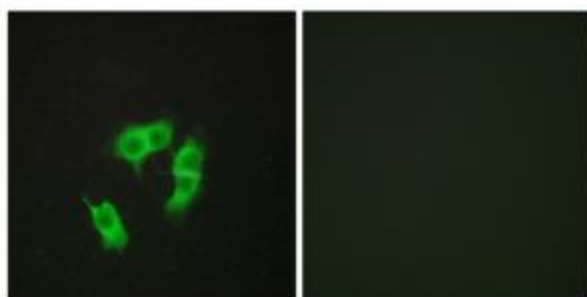
[View online »](#)

Product images:


Western blot analysis of extracts from K562 cells, using ARMX3 antibody. The lane on the right is treated with the synthesized peptide.



Immunohistochemistry analysis of paraffin-embedded human brain tissue using ARMX3 antibody. The picture on the right is treated with the synthesized peptide.



Immunofluorescence analysis of HepG2 cells, using ARMX3 antibody. The picture on the right is treated with the synthesized peptide.