

Product datasheet for **TA315484**

HDAC7A Rabbit Polyclonal Antibody

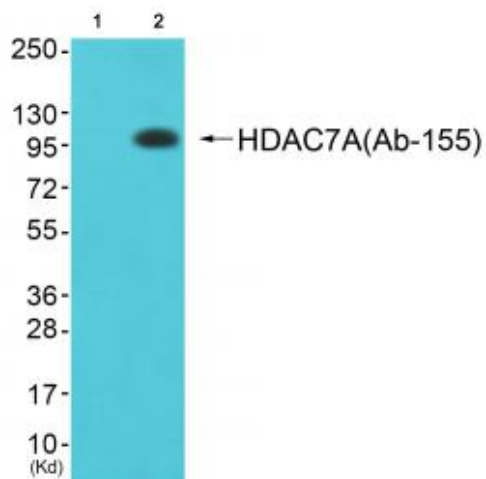
Product data:

Product Type:	Primary Antibodies
Applications:	WB
Recommended Dilution:	WB: 1:500~1:3000, IHC: 1:50~1:100, ELISA: 1:20000
Reactivity:	Human, Mouse, Rat
Host:	Rabbit
Isotype:	IgG
Clonality:	Polyclonal
Immunogen:	The antiserum was produced against synthesized non-phosphopeptide derived from human HDAC7A around the phosphorylation site of serine 155 (T-V-SP-E-P).
Formulation:	Phosphate buffered saline (without Mg ²⁺ and Ca ²⁺), pH 7.4, 150mM NaCl, 0.02% sodium azide and 50% glycerol.
Concentration:	lot specific
Purification:	The antibody was affinity-purified from rabbit antiserum by affinity-chromatography using epitope-specific immunogen.
Conjugation:	Unconjugated
Storage:	Store at -20°C as received.
Stability:	Stable for 12 months from date of receipt.
Database Link:	Entrez Gene 56233 Mouse Entrez Gene 84582 Rat
Synonyms:	DKFZP586J0917; HDAC7
Note:	HDAC7A (Ab-155) antibody detects endogenous levels of total HDAC7A protein.
Protein Families:	Druggable Genome, Transcription Factors

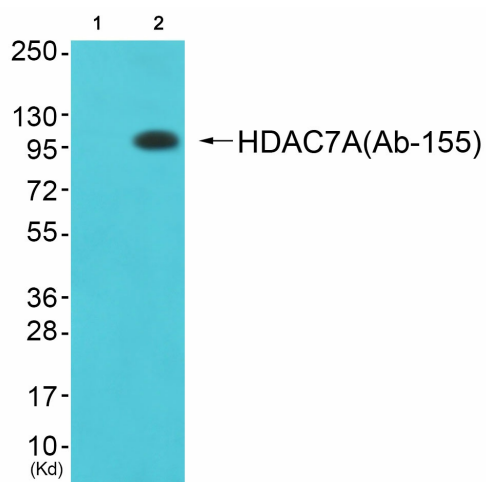


[View online »](#)

Product images:



Western blot analysis of extracts from HeLa cells, using HDAC7A (Ab-155) antibody. The lane on the right is treated with the synthesized peptide.



Western blot analysis of extracts from JK cells (Lane 2), using HDAC7A (Ab-155) Antibody. The lane on the left is treated with synthesized peptide.