

Product datasheet for **TA315482**

CCR11 (ACKR4) Rabbit Polyclonal Antibody

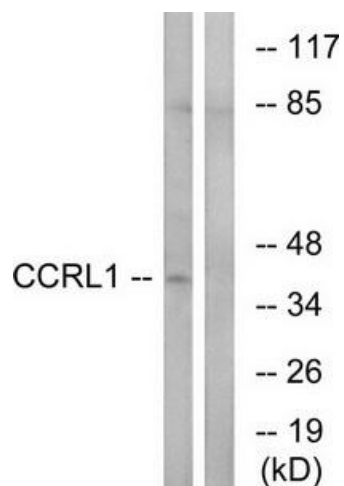
Product data:

Product Type:	Primary Antibodies
Applications:	IF, WB
Recommended Dilution:	WB: 1:500~1:3000, IF: 1:100~1:500, ELISA: 1:60000
Reactivity:	Human, Mouse
Host:	Rabbit
Isotype:	IgG
Clonality:	Polyclonal
Immunogen:	The antiserum was produced against synthesized peptide derived from C-terminal of human CCRL1.
Formulation:	Phosphate buffered saline (without Mg ²⁺ and Ca ²⁺), pH 7.4, 150mM NaCl, 0.02% sodium azide and 50% glycerol.
Concentration:	lot specific
Purification:	The antibody was affinity-purified from rabbit antiserum by affinity-chromatography using epitope-specific immunogen.
Conjugation:	Unconjugated
Storage:	Store at -20°C as received.
Stability:	Stable for 12 months from date of receipt.
Gene Name:	atypical chemokine receptor 4
Database Link:	NP_057641 Entrez Gene 252837 Mouse Entrez Gene 51554 Human Q9NPB9
Synonyms:	CC-CKR-11; CCBP2; CCR-11; CCR10; CCR11; CCRL1; CCX-CKR; CCX CKR; CKR-11; PPR1; VSHK1
Note:	CCRL1 antibody detects endogenous levels of total CCRL1 protein.
Protein Families:	Druggable Genome, GPCR, Transmembrane

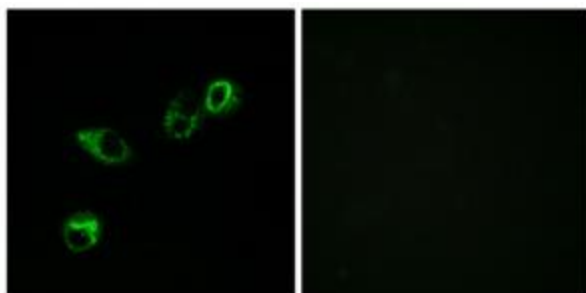


[View online »](#)

Product images:



Western blot analysis of extracts from HepG2 cells, using CCRL1 antibody. The lane on the right is treated with the synthesized peptide.



Immunofluorescence analysis of MCF-7 cells, using CCRL1 antibody. The picture on the right is treated with the synthesized peptide.