

Product datasheet for **TA315481**

CCR11 (ACKR4) Rabbit Polyclonal Antibody

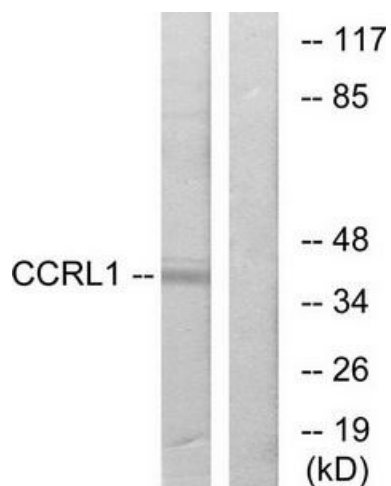
Product data:

| | |
|-----------------------|---|
| Product Type: | Primary Antibodies |
| Applications: | IF, WB |
| Recommended Dilution: | WB: 1:500~1:3000, IF: 1:100~1:500, ELISA: 1:5000 |
| Reactivity: | Human, Mouse |
| Host: | Rabbit |
| Isotype: | IgG |
| Clonality: | Polyclonal |
| Immunogen: | The antiserum was produced against synthesized peptide derived from internal of human CCRL1. |
| Formulation: | Phosphate buffered saline (without Mg ²⁺ and Ca ²⁺), pH 7.4, 150mM NaCl, 0.02% sodium azide and 50% glycerol. |
| Concentration: | lot specific |
| Purification: | The antibody was affinity-purified from rabbit antiserum by affinity-chromatography using epitope-specific immunogen. |
| Conjugation: | Unconjugated |
| Storage: | Store at -20°C as received. |
| Stability: | Stable for 12 months from date of receipt. |
| Gene Name: | atypical chemokine receptor 4 |
| Database Link: | NP_057641 Entrez Gene 252837 Mouse Entrez Gene 51554 Human Q9NPB9 |
| Synonyms: | CC-CKR-11; CCBP2; CCR-11; CCR10; CCR11; CCRL1; CCX-CKR; CCX CKR; CKR-11; PPR1; VSHK1 |
| Note: | CCRL1 antibody detects endogenous levels of total CCRL1 protein. |
| Protein Families: | Druggable Genome, GPCR, Transmembrane |

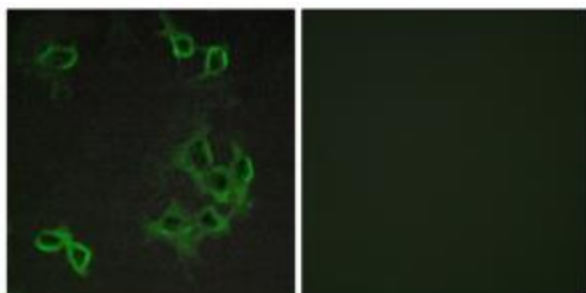


[View online »](#)

Product images:



Western blot analysis of extracts from 293 cells, using CCRL1 antibody. The lane on the right is treated with the synthesized peptide.



Immunofluorescence analysis of COS-7 cells, using CCRL1 antibody. The picture on the right is treated with the synthesized peptide.