

Product datasheet for **TA315478**

Inositol Hexakisphosphate Kinase 2 (IP6K2) Rabbit Polyclonal Antibody

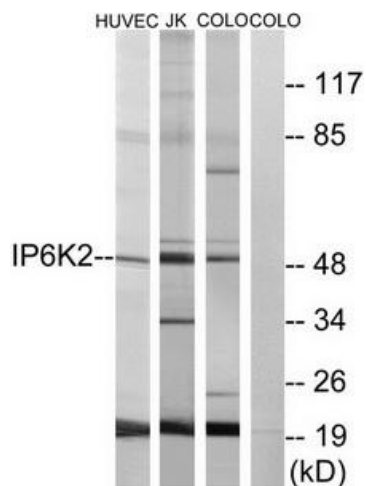
Product data:

Product Type:	Primary Antibodies
Applications:	IF, WB
Recommended Dilution:	WB: 1:500~1:3000, IF: 1:100~1:500, ELISA: 1:40000
Reactivity:	Human, Mouse, Rat
Host:	Rabbit
Isotype:	IgG
Clonality:	Polyclonal
Immunogen:	The antiserum was produced against synthesized peptide derived from internal of human IP6K2.
Formulation:	Phosphate buffered saline (without Mg ²⁺ and Ca ²⁺), pH 7.4, 150mM NaCl, 0.02% sodium azide and 50% glycerol.
Concentration:	lot specific
Purification:	The antibody was affinity-purified from rabbit antiserum by affinity-chromatography using epitope-specific immunogen.
Conjugation:	Unconjugated
Storage:	Store at -20°C as received.
Stability:	Stable for 12 months from date of receipt.
Gene Name:	inositol hexakisphosphate kinase 2
Database Link:	NP_001005909 Entrez Gene 59268 Rat Entrez Gene 76500 Mouse Entrez Gene 51447 Human Q9UHH9
Synonyms:	IHPK2; PIUS
Note:	IP6K2 antibody detects endogenous levels of total IP6K2 protein.
Protein Families:	Druggable Genome

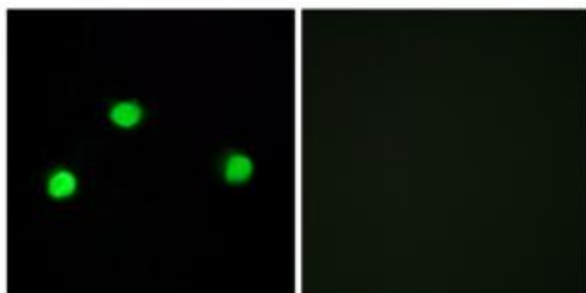


[View online »](#)

Product images:



Western blot analysis of extracts from HUVEC cells, Jurkat cells and COLO cells, using IP6K2 antibody. The lane on the right is treated with the synthesized peptide.



Immunofluorescence analysis of COS-7 cells, using IP6K2 antibody. The picture on the right is treated with the synthesized peptide.