

Product datasheet for **TA315468**

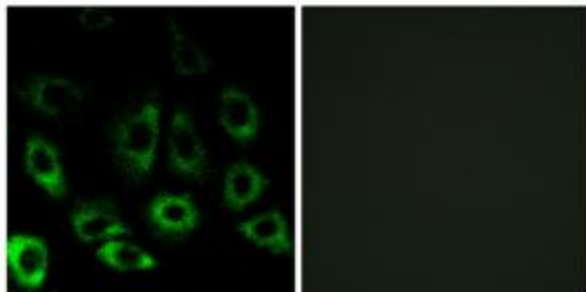
S2P (MBTPS2) Rabbit Polyclonal Antibody

Product data:

Product Type:	Primary Antibodies
Applications:	IF
Recommended Dilution:	IF: 1:100~1:500, ELISA: 1:20000
Reactivity:	Human, Mouse, Rat
Host:	Rabbit
Isotype:	IgG
Clonality:	Polyclonal
Immunogen:	The antiserum was produced against synthesized peptide derived from internal of human MBTPS2.
Formulation:	Phosphate buffered saline (without Mg ²⁺ and Ca ²⁺), pH 7.4, 150mM NaCl, 0.02% sodium azide and 50% glycerol.
Concentration:	lot specific
Purification:	The antibody was affinity-purified from rabbit antiserum by affinity-chromatography using epitope-specific immunogen.
Conjugation:	Unconjugated
Storage:	Store at -20°C as received.
Stability:	Stable for 12 months from date of receipt.
Gene Name:	membrane bound transcription factor peptidase, site 2
Database Link:	NP_056968 Entrez Gene 270669 MouseEntrez Gene 302705 RatEntrez Gene 51360 Human O43462
Synonyms:	BRESEK; IFAP; KFSD; KFSDX; OLMSX; S2P
Note:	MBTPS2 antibody detects endogenous levels of total MBTPS2 protein.
Protein Families:	Druggable Genome, Protease, Transmembrane



[View online »](#)

Product images:

Immunofluorescence analysis of A549 cells, using MBTPS2 antibody. The picture on the right is treated with the synthesized peptide.