

Product datasheet for **TA315463**

CYP39A1 Rabbit Polyclonal Antibody

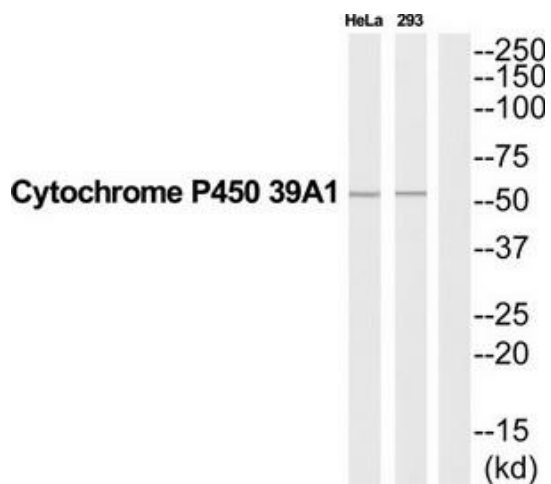
Product data:

Product Type:	Primary Antibodies
Applications:	WB
Recommended Dilution:	WB: 1:500~1:3000, ELISA: 1:40000
Reactivity:	Human
Host:	Rabbit
Isotype:	IgG
Clonality:	Polyclonal
Immunogen:	The antiserum was produced against synthesized peptide derived from Internal of human CYP39A1.
Formulation:	Phosphate buffered saline (without Mg ²⁺ and Ca ²⁺), pH 7.4, 150mM NaCl, 0.02% sodium azide and 50% glycerol.
Concentration:	lot specific
Purification:	The antibody was affinity-purified from rabbit antiserum by affinity-chromatography using epitope-specific immunogen.
Conjugation:	Unconjugated
Storage:	Store at -20°C as received.
Stability:	Stable for 12 months from date of receipt.
Gene Name:	cytochrome P450 family 39 subfamily A member 1
Database Link:	NP_057677 Entrez Gene 51302 Human Q9NYL5
Synonyms:	39a1 (oxysterol 7alpha-hydroxylase); cytochrome P450; family 39; oxysterol 7-alpha-hydroxylase; oxysterol 7alpha-hydroxylase; polypeptide 1; subfamily a
Note:	CYP39A1 antibody detects endogenous levels of total CYP39A1 protein.
Protein Families:	Druggable Genome, P450, Transmembrane
Protein Pathways:	Primary bile acid biosynthesis



[View online »](#)

Product images:



Western blot analysis of extracts from 293/HeLa cells, using CYP39A1 antibody. The lane on the right is treated with the synthesized peptide.