

Product datasheet for **TA315458**

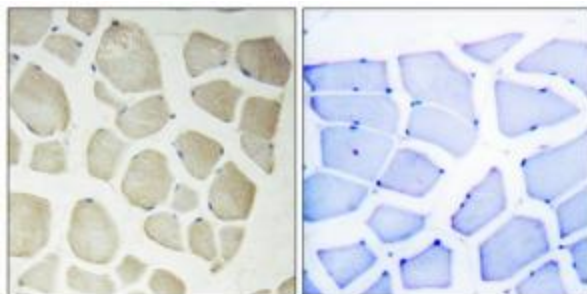
NKIAMRE (CDKL3) Rabbit Polyclonal Antibody

Product data:

Product Type:	Primary Antibodies
Applications:	IHC
Recommended Dilution:	IHC: 1:50~1:100, ELISA: 1:5000
Reactivity:	Human
Host:	Rabbit
Isotype:	IgG
Clonality:	Polyclonal
Immunogen:	The antiserum was produced against synthesized peptide derived from internal of human CDKL3.
Formulation:	Phosphate buffered saline (without Mg ²⁺ and Ca ²⁺), pH 7.4, 150mM NaCl, 0.02% sodium azide and 50% glycerol.
Concentration:	lot specific
Purification:	The antibody was affinity-purified from rabbit antiserum by affinity-chromatography using epitope-specific immunogen.
Conjugation:	Unconjugated
Storage:	Store at -20°C as received.
Stability:	Stable for 12 months from date of receipt.
Gene Name:	cyclin dependent kinase like 3
Database Link:	NP_057592 Entrez Gene 51265 Human Q8IVW4
Synonyms:	NKIAMRE
Note:	CDKL3 antibody detects endogenous levels of total CDKL3 protein.
Protein Families:	Druggable Genome, Protein Kinase



[View online »](#)

Product images:

Immunohistochemistry analysis of paraffin-embedded human skeletal muscle tissue, using CDKL3 antibody. The picture on the right is treated with the synthesized peptide.