

Product datasheet for **TA315456**

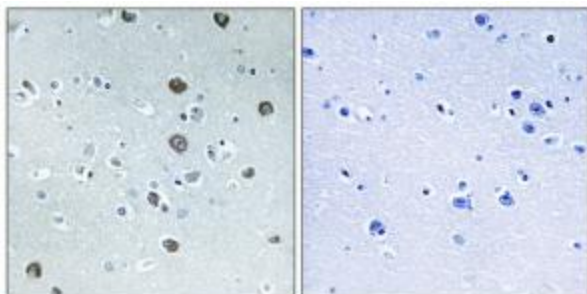
MARCHF2 Rabbit Polyclonal Antibody

Product data:

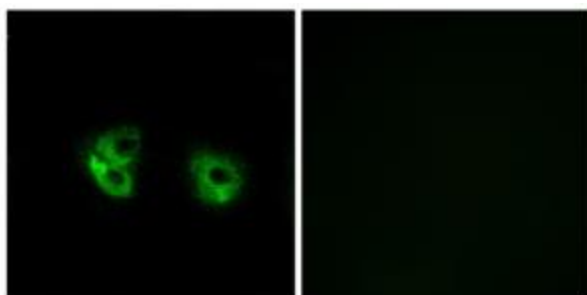
Product Type:	Primary Antibodies
Applications:	IF, IHC
Recommended Dilution:	IHC: 1:50~1:100, IF: 1:100~1:500, ELISA: 1:40000
Reactivity:	Human, Mouse, Rat
Host:	Rabbit
Isotype:	IgG
Clonality:	Polyclonal
Immunogen:	The antiserum was produced against synthesized peptide derived from internal of human MARCH2.
Formulation:	Phosphate buffered saline (without Mg ²⁺ and Ca ²⁺), pH 7.4, 150mM NaCl, 0.02% sodium azide and 50% glycerol.
Concentration:	lot specific
Purification:	The antibody was affinity-purified from rabbit antiserum by affinity-chromatography using epitope-specific immunogen.
Conjugation:	Unconjugated
Storage:	Store at -20°C as received.
Stability:	Stable for 12 months from date of receipt.
Gene Name:	membrane associated ring-CH-type finger 2
Database Link:	NP_057580 Entrez Gene 224703 Mouse Entrez Gene 362849 Rat Entrez Gene 51257 Human Q9P0N8
Synonyms:	HSPC240; MARCH-II; RNF172
Note:	MARCH2 antibody detects endogenous levels of total MARCH2 protein.
Protein Families:	Druggable Genome, Transmembrane



[View online »](#)

Product images:

Immunohistochemistry analysis of paraffin-embedded human brain tissue using MARCH2 antibody. The picture on the right is treated with the synthesized peptide.



Immunofluorescence analysis of A549 cells, using MARCH2 antibody. The picture on the right is treated with the synthesized peptide.