

Product datasheet for **TA315454**

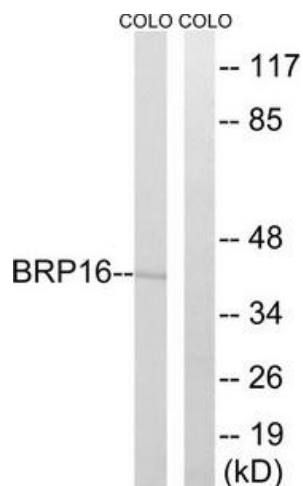
C8orf30A (HGH1) Rabbit Polyclonal Antibody

Product data:

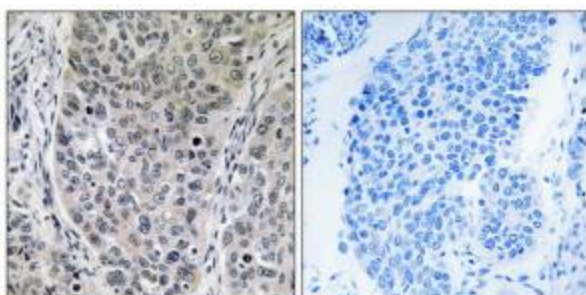
Product Type:	Primary Antibodies
Applications:	IHC, WB
Recommended Dilution:	WB: 1:500~1:3000, IHC: 1:50~1:100, ELISA: 1:40000
Reactivity:	Human, Mouse, Rat
Host:	Rabbit
Isotype:	IgG
Clonality:	Polyclonal
Immunogen:	The antiserum was produced against synthesized peptide derived from internal of human BRP16.
Formulation:	Phosphate buffered saline (without Mg ²⁺ and Ca ²⁺), pH 7.4, 150mM NaCl, 0.02% sodium azide and 50% glycerol.
Concentration:	lot specific
Purification:	The antibody was affinity-purified from rabbit antiserum by affinity-chromatography using epitope-specific immunogen.
Conjugation:	Unconjugated
Storage:	Store at -20°C as received.
Stability:	Stable for 12 months from date of receipt.
Gene Name:	HGH1 homolog
Database Link:	NP_057542 Entrez Gene 59053 Mouse Entrez Gene 315094 Rat Entrez Gene 51236 Human Q9BTY7
Synonyms:	BRP16; BRP16L; C8orf30A; C8orf30B; FAM203A; FAM203B
Note:	BRP16 antibody detects endogenous levels of total BRP16 protein.



[View online »](#)

Product images:

Western blot analysis of extracts from COLO cells, using BRP16 antibody. The lane on the right is treated with the synthesized peptide.



Immunohistochemistry analysis of paraffin-embedded human lung carcinoma tissue, using BRP16 antibody. The picture on the right is treated with the synthesized peptide.