

Product datasheet for **TA315447**

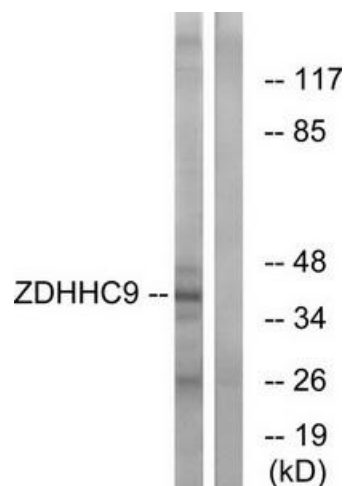
ZDHHC9 Rabbit Polyclonal Antibody

Product data:

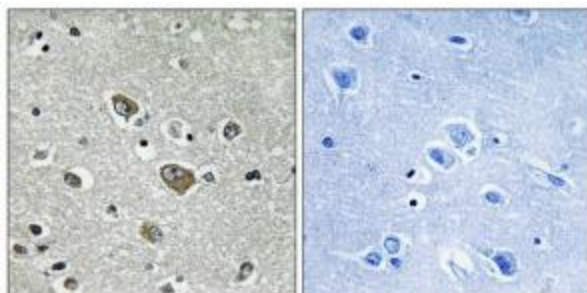
Product Type:	Primary Antibodies
Applications:	IHC, WB
Recommended Dilution:	WB: 1:500~1:3000, IHC: 1:50~1:100, ELISA: 1:40000
Reactivity:	Human, Mouse, Rat
Host:	Rabbit
Isotype:	IgG
Clonality:	Polyclonal
Immunogen:	The antiserum was produced against synthesized peptide derived from C-terminal of human ZDHHC9.
Formulation:	Phosphate buffered saline (without Mg ²⁺ and Ca ²⁺), pH 7.4, 150mM NaCl, 0.02% sodium azide and 50% glycerol.
Concentration:	lot specific
Purification:	The antibody was affinity-purified from rabbit antiserum by affinity-chromatography using epitope-specific immunogen.
Conjugation:	Unconjugated
Storage:	Store at -20°C as received.
Stability:	Stable for 12 months from date of receipt.
Gene Name:	zinc finger DHHC-type containing 9
Database Link:	NP_001008223 Entrez Gene 208884 MouseEntrez Gene 302808 RatEntrez Gene 51114 Human Q9Y397
Synonyms:	CGI89; CXorf11; DHHC9; MMSA1; MRXSZ; ZDHHC10; ZNF379; ZNF380
Note:	DHHC9 antibody detects endogenous levels of total ZDHHC9 protein.
Protein Families:	Transmembrane



[View online »](#)

Product images:

Western blot analysis of extracts from COLO cells, using ZDHHC9 antibody. The lane on the right is treated with the synthesized peptide.



Immunohistochemistry analysis of paraffin-embedded human brain tissue using ZDHHC9 antibody. The picture on the right is treated with the synthesized peptide.