

Product datasheet for **TA315441**

RPS27L Rabbit Polyclonal Antibody

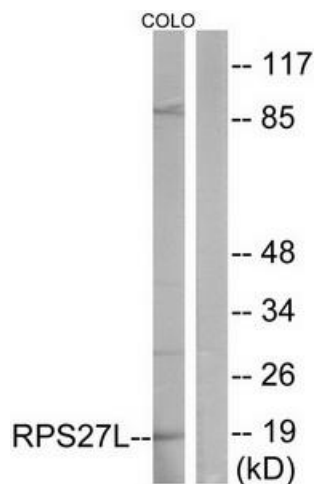
Product data:

Product Type:	Primary Antibodies
Applications:	WB
Recommended Dilution:	WB: 1:500~1:3000, ELISA: 1:10000
Reactivity:	Human, Mouse
Host:	Rabbit
Isotype:	IgG
Clonality:	Polyclonal
Immunogen:	The antiserum was produced against synthesized peptide derived from N-terminal of human RS27L.
Formulation:	Phosphate buffered saline (without Mg ²⁺ and Ca ²⁺), pH 7.4, 150mM NaCl, 0.02% sodium azide and 50% glycerol.
Concentration:	lot specific
Purification:	The antibody was affinity-purified from rabbit antiserum by affinity-chromatography using epitope-specific immunogen.
Conjugation:	Unconjugated
Storage:	Store at -20°C as received.
Stability:	Stable for 12 months from date of receipt.
Gene Name:	ribosomal protein S27 like
Database Link:	NP_057004 Entrez Gene 67941 Mouse Entrez Gene 51065 Human Q71UM5
Synonyms:	40S ribosomal protein S27-like; ribosomal protein S27-like
Note:	RS27L antibody detects endogenous levels of total RS27L protein.
Protein Pathways:	Ribosome

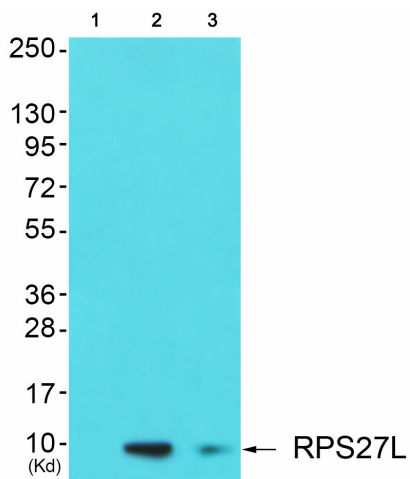


[View online »](#)

Product images:



Western blot analysis of extracts from COLO cells, using RPS27L antibody. The lane on the right is treated with the synthesized peptide.



Western blot analysis of extracts from 3T3 cells (Lane 2) and HepG2 cells (Lane 3), using RPS27L Antibody. The lane on the left is treated with synthesized peptide.