

Product datasheet for **TA315439**

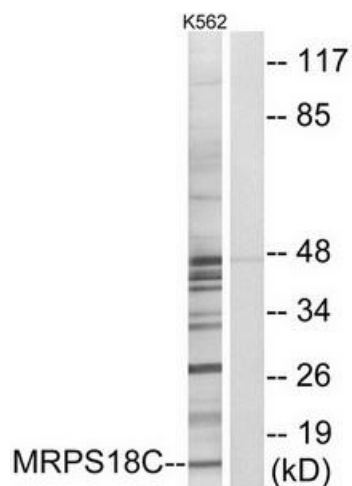
MRPS18C Rabbit Polyclonal Antibody

Product data:

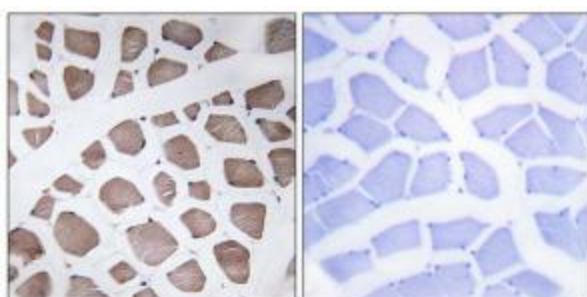
Product Type:	Primary Antibodies
Applications:	IF, IHC, WB
Recommended Dilution:	WB: 1:500~1:3000, IHC: 1:50~1:100, IF: 1:100~1:500, ELISA: 1:40000
Reactivity:	Human, Mouse
Host:	Rabbit
Isotype:	IgG
Clonality:	Polyclonal
Immunogen:	The antiserum was produced against synthesized peptide derived from internal of human MRPS18C.
Formulation:	Phosphate buffered saline (without Mg ²⁺ and Ca ²⁺), pH 7.4, 150mM NaCl, 0.02% sodium azide and 50% glycerol.
Concentration:	lot specific
Purification:	The antibody was affinity-purified from rabbit antiserum by affinity-chromatography using epitope-specific immunogen.
Conjugation:	Unconjugated
Storage:	Store at -20°C as received.
Stability:	Stable for 12 months from date of receipt.
Gene Name:	mitochondrial ribosomal protein S18C
Database Link:	NP_057151 Entrez Gene 68735 Mouse Entrez Gene 51023 Human Q9Y3D5
Synonyms:	CGI-134; MRP-S18-1; MRP-S18-c; MRPS18-1; mrps18-c; S18mt-c
Note:	MRPS18C antibody detects endogenous levels of total MRPS18C protein



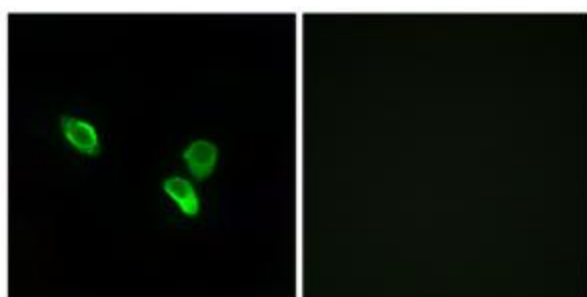
[View online »](#)

Product images:


Western blot analysis of extracts from K562 cells, using MRPS18C antibody. The lane on the right is treated with the synthesized peptide.



Immunohistochemistry analysis of paraffin-embedded human skeletal muscle tissue using MRPS18C antibody. The picture on the right is treated with the synthesized peptide.



Immunofluorescence analysis of MCF-7 cells, using MRPS18C antibody. The picture on the right is treated with the synthesized peptide.