

Product datasheet for **TA315438**

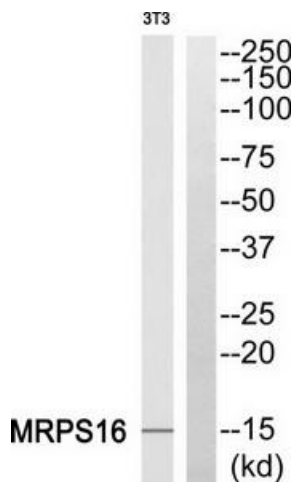
MRPS16 Rabbit Polyclonal Antibody

Product data:

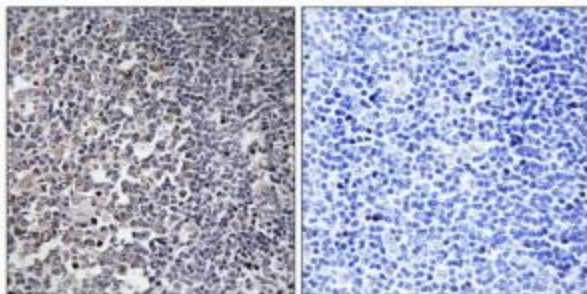
| | |
|-----------------------|--|
| Product Type: | Primary Antibodies |
| Applications: | IHC, WB |
| Recommended Dilution: | WB: 1:500~1:3000, IHC: 1:50~1:100, ELISA: 1:40000 |
| Reactivity: | Human, Mouse |
| Host: | Rabbit |
| Isotype: | IgG |
| Clonality: | Polyclonal |
| Immunogen: | The antiserum was produced against synthesized peptide derived from internal of human MRPS16. |
| Formulation: | Phosphate buffered saline (without Mg ²⁺ and Ca ²⁺), pH 7.4, 150mM NaCl, 0.02% sodium azide and 50% glycerol. |
| Purification: | The antibody was affinity-purified from rabbit antiserum by affinity-chromatography using epitope-specific immunogen. |
| Conjugation: | Unconjugated |
| Storage: | Store at -20°C as received. |
| Stability: | Stable for 12 months from date of receipt. |
| Gene Name: | mitochondrial ribosomal protein S16 |
| Database Link: | NP_057149 Entrez Gene 66242 Mouse Entrez Gene 51021 Human Q9Y3D3 |
| Synonyms: | CGI-132; COXPD2; MRP-S16; RPMS16 |
| Note: | MRPS16 antibody detects endogenous levels of total MRPS16 protein. |



[View online »](#)

Product images:

Western blot analysis of extracts from HepG2 cells, using MRPS16 antibody. The lane on the right is treated with the synthesized peptide.



Immunohistochemistry analysis of paraffin-embedded human tonsil tissue using MRPS16 antibody. The picture on the right is treated with the synthesized peptide.