

Product datasheet for **TA315435**

CDON Rabbit Polyclonal Antibody

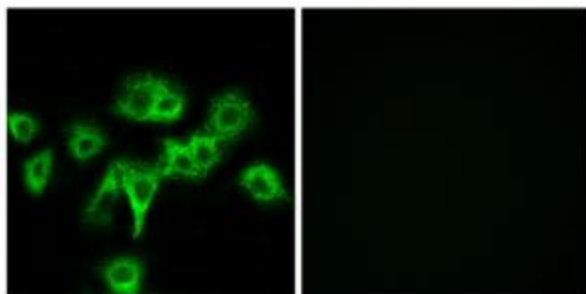
Product data:

Product Type:	Primary Antibodies
Applications:	IF
Recommended Dilution:	IF: 1:100~1:500, ELISA: 1:10000
Reactivity:	Human
Host:	Rabbit
Isotype:	IgG
Clonality:	Polyclonal
Immunogen:	The antiserum was produced against synthesized peptide derived from internal of human CDON.
Formulation:	Phosphate buffered saline (without Mg ²⁺ and Ca ²⁺), pH 7.4, 150mM NaCl, 0.02% sodium azide and 50% glycerol.
Concentration:	lot specific
Purification:	The antibody was affinity-purified from rabbit antiserum by affinity-chromatography using epitope-specific immunogen.
Conjugation:	Unconjugated
Storage:	Store at -20°C as received.
Stability:	Stable for 12 months from date of receipt.
Gene Name:	cell adhesion associated, oncogene regulated
Database Link:	NP_058648 Entrez Gene 50937 Human Q4KMG0
Synonyms:	CDO; CDON1; HPE11; ORCAM
Note:	CDON antibody detects endogenous levels of total CDON protein.
Protein Families:	Transmembrane



[View online »](#)

Product images:



Immunofluorescence analysis of MCF-7 cells, using CDON antibody. The picture on the right is treated with the synthesized peptide.