

## Product datasheet for **TAS2R10**

### TAS2R10 Rabbit Polyclonal Antibody

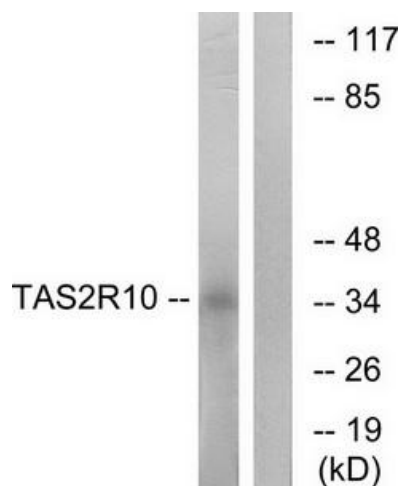
#### Product data:

Product Type:	Primary Antibodies
Applications:	IF, WB
Recommended Dilution:	WB: 1:500~1:3000, IF: 1:100~1:500, ELISA: 1:10000
Reactivity:	Human
Host:	Rabbit
Isotype:	IgG
Clonality:	Polyclonal
Immunogen:	The antiserum was produced against synthesized peptide derived from internal of human TAS2R10.
Formulation:	Phosphate buffered saline (without Mg <sup>2+</sup> and Ca <sup>2+</sup> ), pH 7.4, 150mM NaCl, 0.02% sodium azide and 50% glycerol.
Concentration:	lot specific
Purification:	The antibody was affinity-purified from rabbit antiserum by affinity-chromatography using epitope-specific immunogen.
Conjugation:	Unconjugated
Storage:	Store at -20°C as received.
Stability:	Stable for 12 months from date of receipt.
Gene Name:	taste 2 receptor member 10
Database Link:	<a href="#">NP_076410</a> <a href="#">Entrez Gene 50839 Human</a> <a href="#">Q9NYW0</a>
Synonyms:	T2R10; TRB2
Note:	TAS2R10 antibody detects endogenous levels of total TAS2R10 protein.
Protein Families:	Transmembrane
Protein Pathways:	Taste transduction

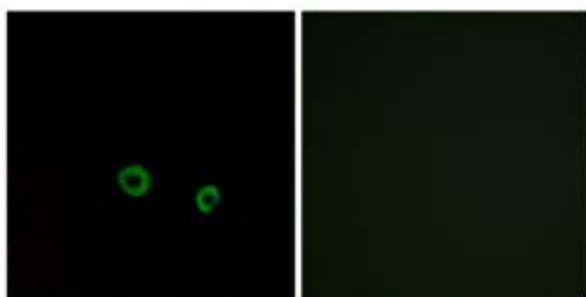


[View online »](#)

## Product images:



Western blot analysis of extracts from LOVO cells, using TAS2R10 antibody. The lane on the right is treated with the synthesized peptide.



Immunofluorescence analysis of MCF-7 cells, using TAS2R10 antibody. The picture on the right is treated with the synthesized peptide.