

Product datasheet for **TA315430**

TAS2R13 Rabbit Polyclonal Antibody

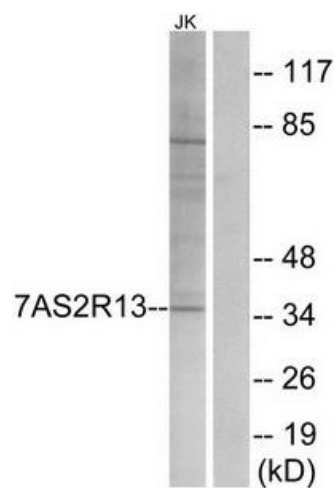
Product data:

Product Type:	Primary Antibodies
Applications:	IF, WB
Recommended Dilution:	WB: 1:500~1:3000, IF: 1:100~1:500, ELISA: 1:10000
Reactivity:	Human
Host:	Rabbit
Isotype:	IgG
Clonality:	Polyclonal
Immunogen:	The antiserum was produced against synthesized peptide derived from internal of human TAS2R13.
Formulation:	Phosphate buffered saline (without Mg ²⁺ and Ca ²⁺), pH 7.4, 150mM NaCl, 0.02% sodium azide and 50% glycerol.
Concentration:	lot specific
Purification:	The antibody was affinity-purified from rabbit antiserum by affinity-chromatography using epitope-specific immunogen.
Conjugation:	Unconjugated
Storage:	Store at -20°C as received.
Stability:	Stable for 12 months from date of receipt.
Gene Name:	taste 2 receptor member 13
Database Link:	NP_076409 Entrez Gene 50838 Human Q9NYV9
Synonyms:	T2R13; TRB3
Note:	TAS2R13 antibody detects endogenous levels of total TAS2R13 protein.
Protein Families:	Transmembrane
Protein Pathways:	Taste transduction

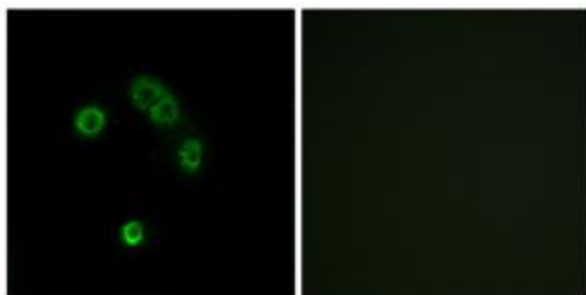


[View online »](#)

Product images:



Western blot analysis of extracts from Jurkat cells, using TAS2R13 antibody. The lane on the right is treated with the synthesized peptide.



Immunofluorescence analysis of MCF-7 cells, using TAS2R13 antibody. The picture on the right is treated with the synthesized peptide.