

## Product datasheet for **TA315421**

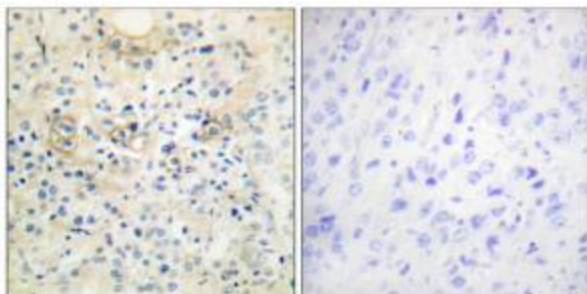
### Anoctamin 7 (ANO7) Rabbit Polyclonal Antibody

#### Product data:

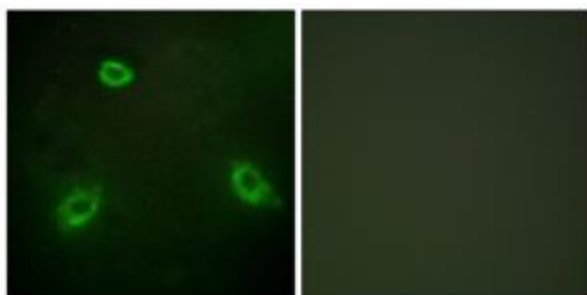
Product Type:	Primary Antibodies
Applications:	IF, IHC
Recommended Dilution:	IHC: 1:50~1:100, IF: 1:100~1:500, ELISA: 1:20000
Reactivity:	Human
Host:	Rabbit
Isotype:	IgG
Clonality:	Polyclonal
Immunogen:	The antiserum was produced against synthesized peptide derived from C-terminal of human TM16G.
Formulation:	Phosphate buffered saline (without Mg <sup>2+</sup> and Ca <sup>2+</sup> ), pH 7.4, 150mM NaCl, 0.02% sodium azide and 50% glycerol.
Concentration:	lot specific
Purification:	The antibody was affinity-purified from rabbit antiserum by affinity-chromatography using epitope-specific immunogen.
Conjugation:	Unconjugated
Storage:	Store at -20°C as received.
Stability:	Stable for 12 months from date of receipt.
Gene Name:	anoctamin 7
Database Link:	<a href="#">NP_001001666</a> <a href="#">Entrez Gene 50636 Human</a> <a href="#">Q6IWH7</a>
Synonyms:	D-TMPP; DTMPP; IPCA-5; IPCA5; NGEP; PCANAP5; PCANAP5L; TMEM16G
Note:	TM16G antibody detects endogenous levels of total TM16G protein.
Protein Families:	Transmembrane



[View online »](#)

**Product images:**

Immunohistochemistry analysis of paraffin-embedded human prostate carcinoma tissue, using TM16G antibody. The picture on the right is treated with the synthesized peptide.



Immunofluorescence analysis of HepG2 cells, using TM16G antibody. The picture on the right is treated with the synthesized peptide.