

Product datasheet for **TA315419**

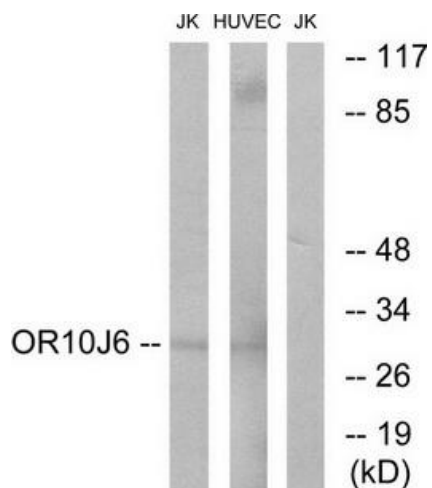
Collagen V (COL5A3) Rabbit Polyclonal Antibody

Product data:

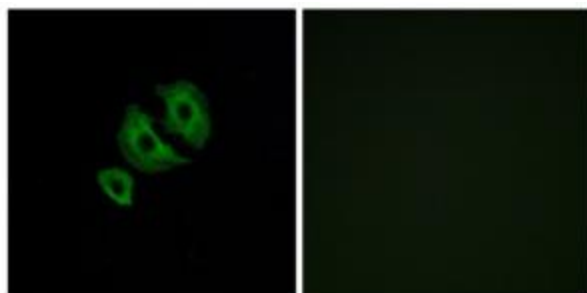
Product Type:	Primary Antibodies
Applications:	IF, WB
Recommended Dilution:	WB: 1:500~1:3000, IF: 1:100~1:500, ELISA: 1:40000
Reactivity:	Human
Host:	Rabbit
Isotype:	IgG
Clonality:	Polyclonal
Immunogen:	The antiserum was produced against synthesized peptide derived from C-terminal of human OR10J6.
Formulation:	Phosphate buffered saline (without Mg ²⁺ and Ca ²⁺), pH 7.4, 150mM NaCl, 0.02% sodium azide and 50% glycerol.
Concentration:	lot specific
Purification:	The antibody was affinity-purified from rabbit antiserum by affinity-chromatography using epitope-specific immunogen.
Conjugation:	Unconjugated
Storage:	Store at -20°C as received.
Stability:	Stable for 12 months from date of receipt.
Gene Name:	collagen type V alpha 3
Database Link:	NP_056534 Entrez Gene 50509 Human P25940
Synonyms:	alpha 3; collagen; OTTHUMP00000195993; pro-(alpha)3(V) collagen; type V
Note:	OR10J6 antibody detects endogenous levels of total OR10J6 protein.
Protein Pathways:	ECM-receptor interaction, Focal adhesion



[View online »](#)

Product images:


Western blot analysis of extracts from Jurkat cells and HUVEC cells, using OR10J6 antibody. The lane on the right is treated with the synthesized peptide.



Immunofluorescence analysis of A549 cells, using OR10J6 antibody. The picture on the right is treated with the synthesized peptide.