

Product datasheet for **TA315416**

MAP4K6 (MINK1) Rabbit Polyclonal Antibody

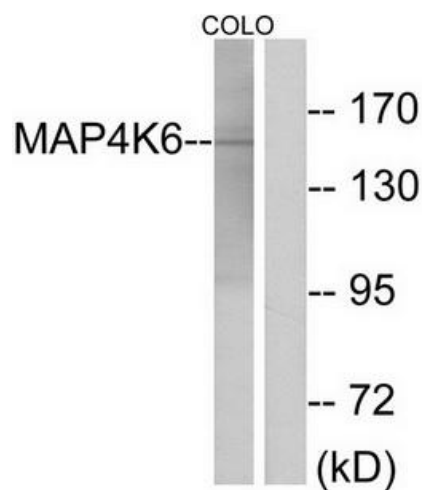
Product data:

Product Type:	Primary Antibodies
Applications:	WB
Recommended Dilution:	WB: 1:500~1:3000, ELISA: 1:20000
Reactivity:	Human, Mouse
Host:	Rabbit
Isotype:	IgG
Clonality:	Polyclonal
Immunogen:	The antiserum was produced against synthesized peptide derived from internal of human MAP4K6.
Formulation:	Phosphate buffered saline (without Mg ²⁺ and Ca ²⁺), pH 7.4, 150mM NaCl, 0.02% sodium azide and 50% glycerol.
Concentration:	lot specific
Purification:	The antibody was affinity-purified from rabbit antiserum by affinity-chromatography using epitope-specific immunogen.
Conjugation:	Unconjugated
Storage:	Store at -20°C as received.
Stability:	Stable for 12 months from date of receipt.
Gene Name:	misshapen like kinase 1
Database Link:	NP_001020108 Entrez Gene 50932 Mouse Entrez Gene 50488 Human Q8N4C8
Synonyms:	B55; MAP4K6; MINK; YSK2; ZC3
Note:	MAP4K6 antibody detects endogenous levels of total MAP4K6 protein.
Protein Families:	Druggable Genome, Protein Kinase



[View online »](#)

Product images:



Western blot analysis of extracts from COLO cells, using MAP4K6 antibody. The lane on the right is treated with the synthesized peptide.