

Product datasheet for **TA315411**

SOX8 Rabbit Polyclonal Antibody

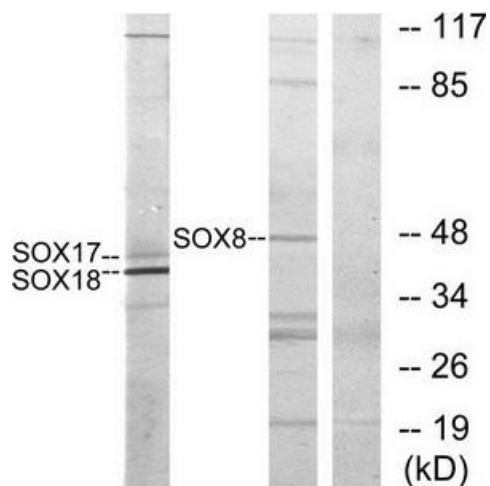
Product data:

Product Type:	Primary Antibodies
Applications:	IHC, WB
Recommended Dilution:	WB: 1:500~1:3000, IHC: 1:50~1:100, ELISA: 1:10000
Reactivity:	Human, Mouse
Host:	Rabbit
Isotype:	IgG
Clonality:	Polyclonal
Immunogen:	The antiserum was produced against synthesized peptide derived from C-terminal of human SOX8/9/17/18.
Formulation:	Phosphate buffered saline (without Mg ²⁺ and Ca ²⁺), pH 7.4, 150mM NaCl, 0.02% sodium azide and 50% glycerol.
Concentration:	lot specific
Purification:	The antibody was affinity-purified from rabbit antiserum by affinity-chromatography using epitope-specific immunogen.
Conjugation:	Unconjugated
Storage:	Store at -20°C as received.
Stability:	Stable for 12 months from date of receipt.
Gene Name:	SRY-box 8
Database Link:	NP_055402 Entrez Gene 20681 Mouse Entrez Gene 30812 Human P57073
Synonyms:	MGC24837
Note:	SOX8/9/17/18 antibody detects endogenous levels of total SOX8/9/17/18 protein.
Protein Families:	Transcription Factors

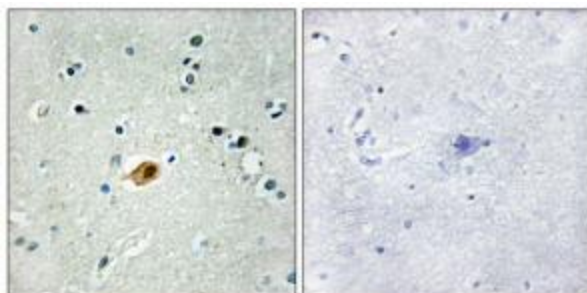


[View online »](#)

Product images:



Western blot analysis of extracts from COS7 cells, untreated or treated with serum (10%, 30mins), using SOX8/9/17/18 antibody. The lane on the right is treated with the synthesized peptide.



Immunohistochemistry analysis of paraffin-embedded human brain tissue using SOX8/9/17/18 antibody. The picture on the right is treated with the synthesized peptide.