

Product datasheet for **TA315408**

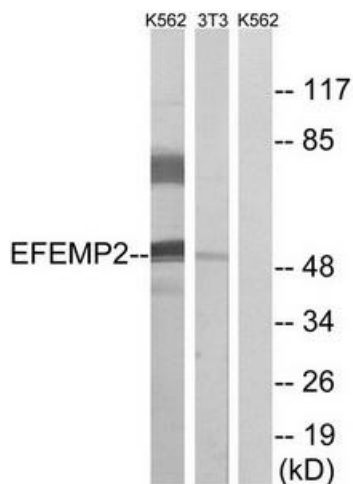
EFEMP2 Rabbit Polyclonal Antibody

Product data:

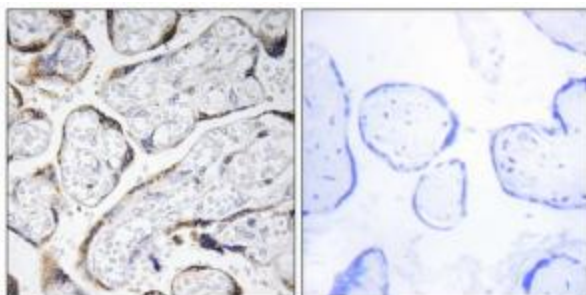
Product Type:	Primary Antibodies
Applications:	IF, IHC, WB
Recommended Dilution:	WB: 1:500~1:3000, IHC: 1:50~1:100, IF: 1:100~1:500, ELISA: 1:10000
Reactivity:	Human
Host:	Rabbit
Isotype:	IgG
Clonality:	Polyclonal
Immunogen:	The antiserum was produced against synthesized peptide derived from internal of human EFEMP2.
Formulation:	Phosphate buffered saline (without Mg ²⁺ and Ca ²⁺), pH 7.4, 150mM NaCl, 0.02% sodium azide and 50% glycerol.
Concentration:	lot specific
Purification:	The antibody was affinity-purified from rabbit antiserum by affinity-chromatography using epitope-specific immunogen.
Conjugation:	Unconjugated
Storage:	Store at -20°C as received.
Stability:	Stable for 12 months from date of receipt.
Gene Name:	EGF containing fibulin like extracellular matrix protein 2
Database Link:	NP_058634 Entrez Gene 30008 Human O95967
Synonyms:	ARCL1B; FBLN4; MBP1; UPH1
Note:	EFEMP2 antibody detects endogenous levels of total EFEMP2 protein.
Protein Families:	Druggable Genome, Secreted Protein



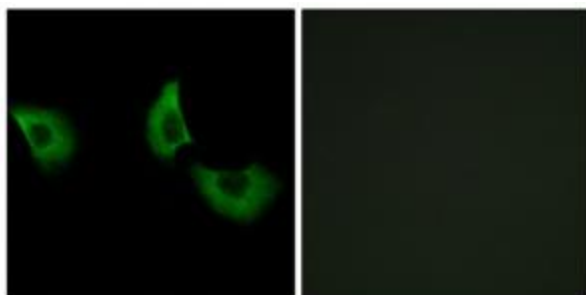
[View online »](#)

Product images:


Western blot analysis of extracts from K562 cells and 3T3 cells, using EFEMP2 antibody. The lane on the right is treated with the synthesized peptide.



Immunohistochemistry analysis of paraffin-embedded human placenta tissue using EFEMP2 antibody. The picture on the right is treated with the synthesized peptide.



Immunofluorescence analysis of A549 cells, using EFEMP2 antibody. The picture on the right is treated with the synthesized peptide.