

Product datasheet for **TA315405**

DMGDH Rabbit Polyclonal Antibody

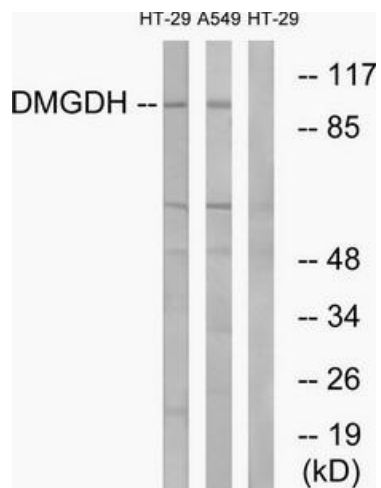
Product data:

| | |
|-----------------------|--|
| Product Type: | Primary Antibodies |
| Applications: | WB |
| Recommended Dilution: | WB: 1:500~1:3000, ELISA: 1:20000 |
| Reactivity: | Human |
| Host: | Rabbit |
| Isotype: | IgG |
| Clonality: | Polyclonal |
| Immunogen: | The antiserum was produced against synthesized peptide derived from C-terminal of human DMGDH. |
| Formulation: | Phosphate buffered saline (without Mg ²⁺ and Ca ²⁺), pH 7.4, 150mM NaCl, 0.02% sodium azide and 50% glycerol. |
| Concentration: | lot specific |
| Purification: | The antibody was affinity-purified from rabbit antiserum by affinity-chromatography using epitope-specific immunogen. |
| Conjugation: | Unconjugated |
| Storage: | Store at -20°C as received. |
| Stability: | Stable for 12 months from date of receipt. |
| Gene Name: | dimethylglycine dehydrogenase |
| Database Link: | NP_037523 Entrez Gene 29958 Human Q9UI17 |
| Synonyms: | DMGDHD; ME2GLYDH |
| Note: | DMGDH antibody detects endogenous levels of total DMGDH protein. |
| Protein Pathways: | Glycine, serine and threonine metabolism, Metabolic pathways |



[View online »](#)

Product images:



Western blot analysis of extracts from HT-29 cells and A549 cells, using DMGDH antibody. The lane on the right is treated with the synthesized peptide.