

## Product datasheet for **TA315400**

### TRA2A Rabbit Polyclonal Antibody

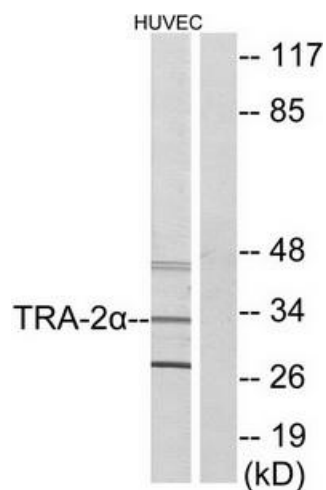
#### Product data:

Product Type:	Primary Antibodies
Applications:	IF, IHC, WB
Recommended Dilution:	WB: 1:500~1:3000, IHC: 1:50~1:100, IF: 1:100~1:500, ELISA: 1:20000
Reactivity:	Human, Mouse
Host:	Rabbit
Isotype:	IgG
Clonality:	Polyclonal
Immunogen:	The antiserum was produced against synthesized peptide derived from internal of human TRA-2a.
Formulation:	Phosphate buffered saline (without Mg <sup>2+</sup> and Ca <sup>2+</sup> ), pH 7.4, 150mM NaCl, 0.02% sodium azide and 50% glycerol.
Concentration:	lot specific
Purification:	The antibody was affinity-purified from rabbit antiserum by affinity-chromatography using epitope-specific immunogen.
Conjugation:	Unconjugated
Storage:	Store at -20°C as received.
Stability:	Stable for 12 months from date of receipt.
Gene Name:	transformer 2 alpha homolog
Database Link:	<a href="#">NP_037425</a> <a href="#">Entrez Gene 101214 Mouse</a> <a href="#">Entrez Gene 29896 Human</a> <a href="#">Q13595</a>
Synonyms:	AWMS1; HSU53209
Note:	TRA-2. antibody detects endogenous levels of total TRA-2. protein.
Protein Pathways:	Spliceosome

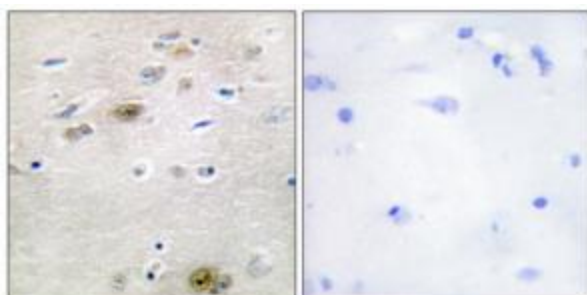


[View online »](#)

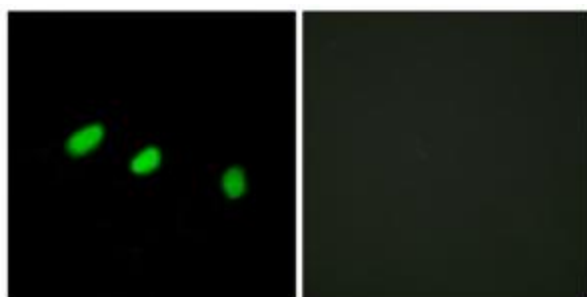
## Product images:



Western blot analysis of extracts from HUVEC cells, using TRA-2a antibody. The lane on the right is treated with the synthesized peptide.



Immunohistochemistry analysis of paraffin-embedded human brain tissue using TRA-2a antibody. The picture on the right is treated with the synthesized peptide.



Immunofluorescence analysis of HeLa cells, using TRA-2a antibody. The picture on the right is treated with the synthesized peptide.