

Product datasheet for **TA315398**

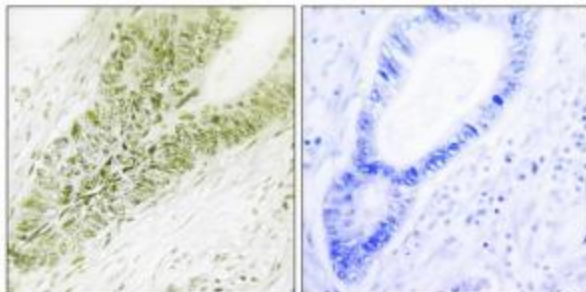
UBN1 Rabbit Polyclonal Antibody

Product data:

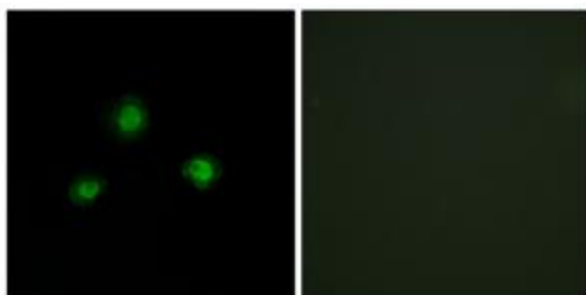
Product Type:	Primary Antibodies
Applications:	IF, IHC
Recommended Dilution:	IHC: 1:50~1:100, IF: 1:100~1:500, ELISA: 1:40000
Reactivity:	Human, Mouse
Host:	Rabbit
Isotype:	IgG
Clonality:	Polyclonal
Immunogen:	The antiserum was produced against synthesized peptide derived from internal of human Ubinuclein.
Formulation:	Phosphate buffered saline (without Mg ²⁺ and Ca ²⁺), pH 7.4, 150mM NaCl, 0.02% sodium azide and 50% glycerol.
Concentration:	lot specific
Purification:	The antibody was affinity-purified from rabbit antiserum by affinity-chromatography using epitope-specific immunogen.
Conjugation:	Unconjugated
Storage:	Store at -20°C as received.
Stability:	Stable for 12 months from date of receipt.
Gene Name:	ubnuclein 1
Database Link:	NP_058632 Entrez Gene 170644 Mouse Entrez Gene 29855 Human Q9NPG3
Synonyms:	VT; VT4
Note:	Ubinuclein antibody detects endogenous levels of total Ubinuclein protein.



[View online »](#)

Product images:

Immunohistochemistry analysis of paraffin-embedded human colon carcinoma tissue, using Ubinuclein antibody. The picture on the right is treated with the synthesized peptide.



Immunofluorescence analysis of A549 cells, using Ubinuclein antibody. The picture on the right is treated with the synthesized peptide.