

## Product datasheet for **TA315391**

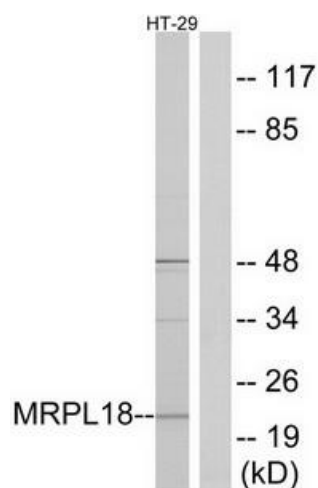
### MRPL18 Rabbit Polyclonal Antibody

#### Product data:

Product Type:	Primary Antibodies
Applications:	WB
Recommended Dilution:	WB: 1:500~1:3000, ELISA: 1:1000
Reactivity:	Human
Host:	Rabbit
Isotype:	IgG
Clonality:	Polyclonal
Immunogen:	The antiserum was produced against synthesized peptide derived from internal of human MRPL18.
Formulation:	Phosphate buffered saline (without Mg <sup>2+</sup> and Ca <sup>2+</sup> ), pH 7.4, 150mM NaCl, 0.02% sodium azide and 50% glycerol.
Concentration:	lot specific
Purification:	The antibody was affinity-purified from rabbit antiserum by affinity-chromatography using epitope-specific immunogen.
Conjugation:	Unconjugated
Storage:	Store at -20°C as received.
Stability:	Stable for 12 months from date of receipt.
Gene Name:	mitochondrial ribosomal protein L18
Database Link:	<a href="#">NP_054880</a> <a href="#">Entrez Gene 29074 Human</a> <a href="#">Q9H0U6</a>
Synonyms:	HSPC071; L18mt; MRP-L18
Note:	MRPL18 antibody detects endogenous levels of total MRPL18 protein.

[View online »](#)

## Product images:



Western blot analysis of extracts from HT-29 cells, using MRPL18 antibody. The lane on the right is treated with the synthesized peptide.