

## Product datasheet for **TA315389**

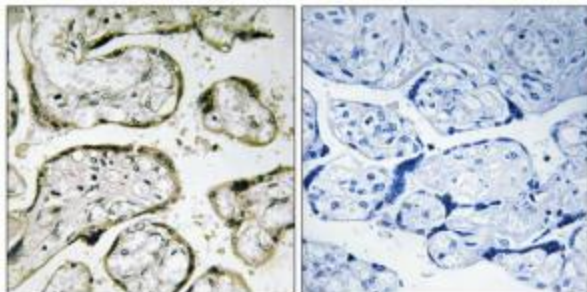
### MRPL42 Rabbit Polyclonal Antibody

#### Product data:

Product Type:	Primary Antibodies
Applications:	IHC
Recommended Dilution:	IHC: 1:50~1:100, ELISA: 1:40000
Reactivity:	Human
Host:	Rabbit
Isotype:	IgG
Clonality:	Polyclonal
Immunogen:	The antiserum was produced against synthesized peptide derived from internal of human MRPS32.
Formulation:	Phosphate buffered saline (without Mg <sup>2+</sup> and Ca <sup>2+</sup> ), pH 7.4, 150mM NaCl, 0.02% sodium azide and 50% glycerol.
Concentration:	lot specific
Purification:	The antibody was affinity-purified from rabbit antiserum by affinity-chromatography using epitope-specific immunogen.
Conjugation:	Unconjugated
Storage:	Store at -20°C as received.
Stability:	Stable for 12 months from date of receipt.
Gene Name:	mitochondrial ribosomal protein L42
Database Link:	<a href="#">NP_054769</a> <a href="#">Entrez Gene 28977 Human</a> <a href="#">Q9Y6G3</a>
Synonyms:	HSPC204; L31MT; L42MT; MRP-L31; MRP-L42; MRP-S32; MRPL31; MRPS32; PTD007; RPML31; S32MT
Note:	MRPS32 antibody detects endogenous levels of total MRPS32 protein.



[View online »](#)

**Product images:**

Immunohistochemistry analysis of paraffin-embedded human placenta tissue using MRPS32 antibody. The picture on the right is treated with the synthesized peptide.