

Product datasheet for **TA315380**

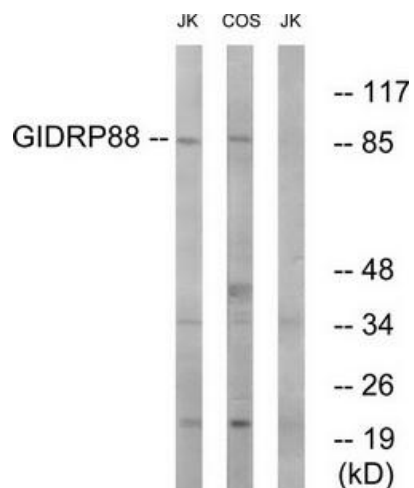
GIDRP88 (R3HCC1L) Rabbit Polyclonal Antibody

Product data:

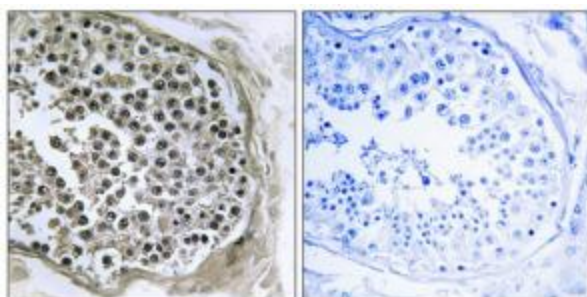
Product Type:	Primary Antibodies
Applications:	IHC, WB
Recommended Dilution:	WB: 1:500~1:3000, IHC: 1:50~1:100, ELISA: 1:40000
Reactivity:	Human, Mouse
Host:	Rabbit
Isotype:	IgG
Clonality:	Polyclonal
Immunogen:	The antiserum was produced against synthesized peptide derived from internal of human GIDRP88.
Formulation:	Phosphate buffered saline (without Mg ²⁺ and Ca ²⁺), pH 7.4, 150mM NaCl, 0.02% sodium azide and 50% glycerol.
Concentration:	lot specific
Purification:	The antibody was affinity-purified from rabbit antiserum by affinity-chromatography using epitope-specific immunogen.
Conjugation:	Unconjugated
Storage:	Store at -20°C as received.
Stability:	Stable for 12 months from date of receipt.
Gene Name:	R3H domain and coiled-coil containing 1 like
Database Link:	NP_612478 Entrez Gene 52013 Mouse Entrez Gene 27291 Human Q7Z5L2
Synonyms:	C10orf28; GIDRP86; GIDRP88; PSORT
Note:	GIDRP88 antibody detects endogenous levels of total GIDRP88 protein.



[View online »](#)

Product images:


Western blot analysis of extracts from Jurkat cells and COS cells, using GIDRP88 antibody. The lane on the right is treated with the synthesized peptide.



Immunohistochemistry analysis of paraffin-embedded human esophagus tissue using GIDRP88 antibody. The picture on the right is treated with the synthesized peptide.