

Product datasheet for **TA315378**

PDCD4 Rabbit Polyclonal Antibody

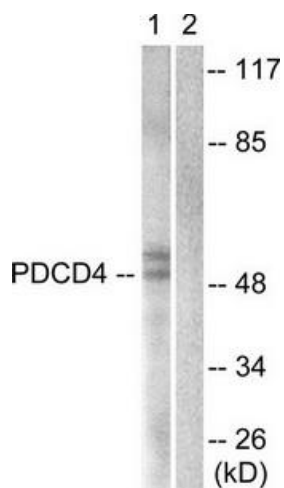
Product data:

Product Type:	Primary Antibodies
Applications:	IF, WB
Recommended Dilution:	WB: 1:500~1:3000, IF: 1:100~1:500, ELISA: 1:1000
Reactivity:	Human, Mouse, Rat
Host:	Rabbit
Isotype:	IgG
Clonality:	Polyclonal
Immunogen:	The antiserum was produced against synthesized non-phosphopeptide derived from human PDCD4 around the phosphorylation site of serine 457 (F-V-SP-E-G).
Formulation:	Phosphate buffered saline (without Mg ²⁺ and Ca ²⁺), pH 7.4, 150mM NaCl, 0.02% sodium azide and 50% glycerol.
Concentration:	lot specific
Purification:	The antibody was affinity-purified from rabbit antiserum by affinity-chromatography using epitope-specific immunogen.
Conjugation:	Unconjugated
Storage:	Store at -20°C as received.
Stability:	Stable for 12 months from date of receipt.
Gene Name:	programmed cell death 4 (neoplastic transformation inhibitor)
Database Link:	NP_663314 Entrez Gene 18569 MouseEntrez Gene 64031 RatEntrez Gene 27250 Human Q53EL6
Synonyms:	H731
Note:	PDCD4 (Ab-457) antibody detects endogenous levels of total PDCD4 protein.
Protein Families:	Druggable Genome

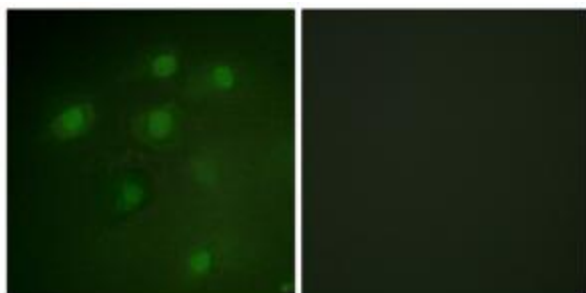


[View online »](#)

Product images:



Western blot analysis of extracts from 293 cells, using PDCD4 (Ab-457) antibody. The lane on the right is treated with the synthesized peptide.



Immunofluorescence analysis of HeLa cells, using PDCD4 (Ab-457) antibody. The picture on the right is treated with the synthesized peptide.