

## Product datasheet for **TA315375**

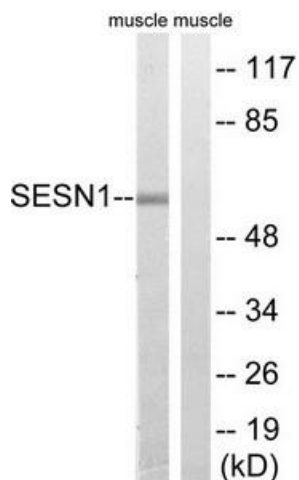
### SESN1 Rabbit Polyclonal Antibody

#### Product data:

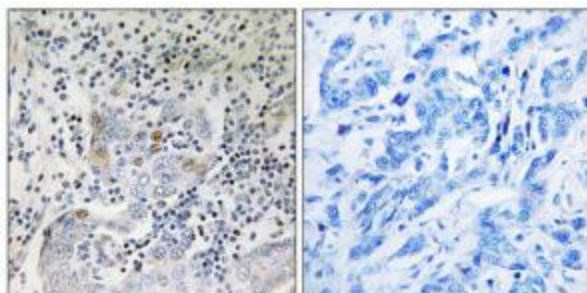
Product Type:	Primary Antibodies
Applications:	IHC, WB
Recommended Dilution:	WB: 1:500~1:3000, IHC: 1:50~1:100, ELISA: 1:20000
Reactivity:	Human, Mouse
Host:	Rabbit
Isotype:	IgG
Clonality:	Polyclonal
Immunogen:	The antiserum was produced against synthesized peptide derived from internal of human SESN1.
Formulation:	Phosphate buffered saline (without Mg <sup>2+</sup> and Ca <sup>2+</sup> ), pH 7.4, 150mM NaCl, 0.02% sodium azide and 50% glycerol.
Concentration:	lot specific
Purification:	The antibody was affinity-purified from rabbit antiserum by affinity-chromatography using epitope-specific immunogen.
Conjugation:	Unconjugated
Storage:	Store at -20°C as received.
Stability:	Stable for 12 months from date of receipt.
Gene Name:	sestrin 1
Database Link:	<a href="#">NP_055269</a> <a href="#">Entrez Gene 140742 Mouse</a> <a href="#">Entrez Gene 27244 Human</a> <a href="#">Q9Y6P5</a>
Synonyms:	PA26; SEST1
Note:	SESN1 antibody detects endogenous levels of total SESN1 protein.
Protein Pathways:	p53 signaling pathway



[View online »](#)

**Product images:**

Western blot analysis of extracts from rat muscle cells, using SESN1 antibody. The lane on the right is treated with the synthesized peptide.



Immunohistochemistry analysis of paraffin-embedded human breast carcinoma tissue, using SESN1 antibody. The picture on the right is treated with the synthesized peptide.