

Product datasheet for **TA315373**

ARFIP1 Rabbit Polyclonal Antibody

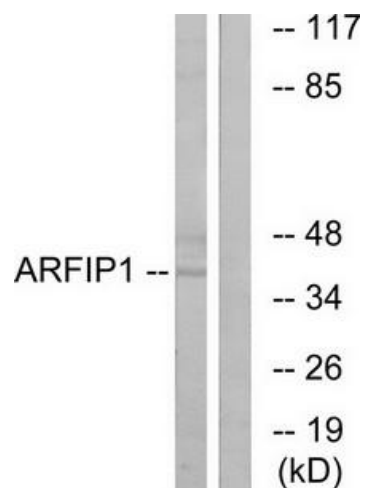
Product data:

Product Type:	Primary Antibodies
Applications:	IF, WB
Recommended Dilution:	WB: 1:500~1:3000, IF: 1:100~1:500, ELISA: 1:40000
Reactivity:	Human, Mouse, Rat
Host:	Rabbit
Isotype:	IgG
Clonality:	Polyclonal
Immunogen:	The antiserum was produced against synthesized peptide derived from internal of human ARFIP1.
Formulation:	Phosphate buffered saline (without Mg ²⁺ and Ca ²⁺), pH 7.4, 150mM NaCl, 0.02% sodium azide and 50% glycerol.
Concentration:	lot specific
Purification:	The antibody was affinity-purified from rabbit antiserum by affinity-chromatography using epitope-specific immunogen.
Conjugation:	Unconjugated
Storage:	Store at -20°C as received.
Stability:	Stable for 12 months from date of receipt.
Gene Name:	ADP ribosylation factor interacting protein 1
Database Link:	NP_001020764 Entrez Gene 60382 Rat Entrez Gene 99889 Mouse Entrez Gene 27236 Human P53367
Synonyms:	HSU52521
Note:	ARFIP1 antibody detects endogenous levels of total ARFIP1 protein.



[View online »](#)

Product images:



Western blot analysis of extracts from Jurkat cells, using ARFIP1 antibody. The lane on the right is treated with the synthesized peptide.



Immunofluorescence analysis of A549 cells, using ARFIP1 antibody. The picture on the right is treated with the synthesized peptide.