

Product datasheet for **TA315372**

GCP4 (TUBGCP4) Rabbit Polyclonal Antibody

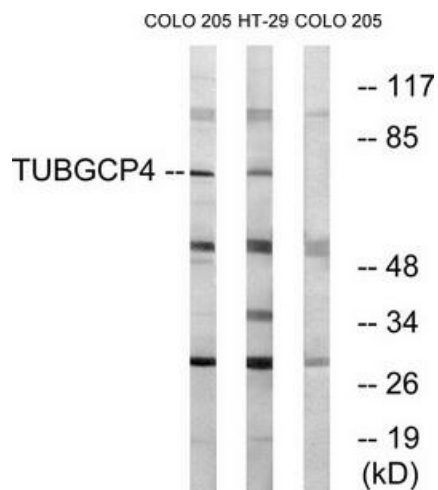
Product data:

Product Type:	Primary Antibodies
Applications:	WB
Recommended Dilution:	WB: 1:500~1:3000, ELISA: 1:10000
Reactivity:	Human, Mouse
Host:	Rabbit
Isotype:	IgG
Clonality:	Polyclonal
Immunogen:	The antiserum was produced against synthesized peptide derived from internal of human TUBGCP4.
Formulation:	Phosphate buffered saline (without Mg ²⁺ and Ca ²⁺), pH 7.4, 150mM NaCl, 0.02% sodium azide and 50% glycerol.
Concentration:	lot specific
Purification:	The antibody was affinity-purified from rabbit antiserum by affinity-chromatography using epitope-specific immunogen.
Conjugation:	Unconjugated
Storage:	Store at -20°C as received.
Stability:	Stable for 12 months from date of receipt.
Gene Name:	tubulin gamma complex associated protein 4
Database Link:	NP_055259 Entrez Gene 51885 Mouse Entrez Gene 27229 Human Q9UGJ1
Synonyms:	76P; GCP-4; GCP4; Grip76
Note:	TUBGCP4 antibody detects endogenous levels of total TUBGCP4 protein.



[View online »](#)

Product images:



Western blot analysis of extracts from COLO cells and HT-29 cells, using TUBGCP4 antibody. The lane on the right is treated with the synthesized peptide.