

## Product datasheet for **TA315369**

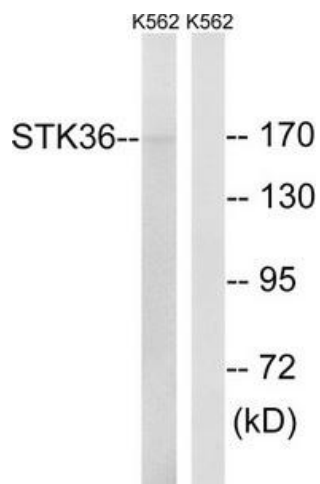
### STK36 Rabbit Polyclonal Antibody

#### Product data:

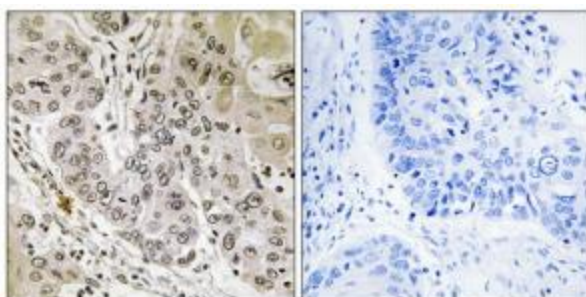
Product Type:	Primary Antibodies
Applications:	IHC, WB
Recommended Dilution:	WB: 1:500~1:3000, IHC: 1:50~1:100, ELISA: 1:1000
Reactivity:	Human, Mouse
Host:	Rabbit
Isotype:	IgG
Clonality:	Polyclonal
Immunogen:	The antiserum was produced against synthesized peptide derived from internal of human STK36.
Formulation:	Phosphate buffered saline (without Mg <sup>2+</sup> and Ca <sup>2+</sup> ), pH 7.4, 150mM NaCl, 0.02% sodium azide and 50% glycerol.
Concentration:	lot specific
Purification:	The antibody was affinity-purified from rabbit antiserum by affinity-chromatography using epitope-specific immunogen.
Conjugation:	Unconjugated
Storage:	Store at -20°C as received.
Stability:	Stable for 12 months from date of receipt.
Gene Name:	serine/threonine kinase 36
Database Link:	<a href="#">NP_056505</a> <a href="#">Entrez Gene 269209 Mouse</a> <a href="#">Entrez Gene 27148 Human</a> <a href="#">Q9NRP7</a>
Synonyms:	FU
Note:	STK36 antibody detects endogenous levels of total STK36 protein.
Protein Families:	Druggable Genome, Protein Kinase
Protein Pathways:	Basal cell carcinoma, Hedgehog signaling pathway, Pathways in cancer



[View online »](#)

**Product images:**

Western blot analysis of extracts from K562 cells, using STK36 antibody. The lane on the right is treated with the synthesized peptide.



Immunohistochemistry analysis of paraffin-embedded human lung carcinoma tissue, using STK36 antibody. The picture on the right is treated with the synthesized peptide.