

Product datasheet for **TA315368**

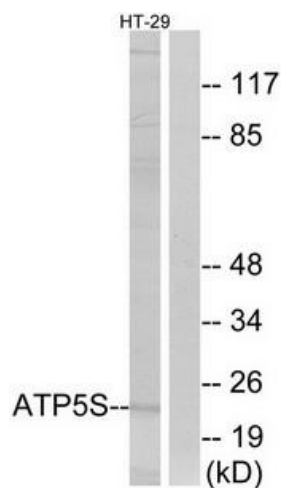
DMAC2L Rabbit Polyclonal Antibody

Product data:

Product Type:	Primary Antibodies
Applications:	WB
Recommended Dilution:	WB: 1:500~1:3000, ELISA: 1:10000
Reactivity:	Human, Mouse
Host:	Rabbit
Isotype:	IgG
Clonality:	Polyclonal
Immunogen:	The antiserum was produced against synthesized peptide derived from internal of human ATP5S.
Formulation:	Phosphate buffered saline (without Mg ²⁺ and Ca ²⁺), pH 7.4, 150mM NaCl, 0.02% sodium azide and 50% glycerol.
Concentration:	lot specific
Purification:	The antibody was affinity-purified from rabbit antiserum by affinity-chromatography using epitope-specific immunogen.
Conjugation:	Unconjugated
Storage:	Store at -20°C as received.
Stability:	Stable for 12 months from date of receipt.
Gene Name:	ATP synthase, H ⁺ transporting, mitochondrial Fo complex subunit s (factor B)
Database Link:	NP_001003803 Entrez Gene 68055 Mouse Entrez Gene 27109 Human Q99766
Synonyms:	ATPW; FB; HSU79253
Note:	ATP5S antibody detects endogenous levels of total ATP5S protein.

[View online »](#)

Product images:



Western blot analysis of extracts from HT-29 cells, using ATP5S antibody. The lane on the right is treated with the synthesized peptide.