

Product datasheet for **TA315358**

NOX1 Rabbit Polyclonal Antibody

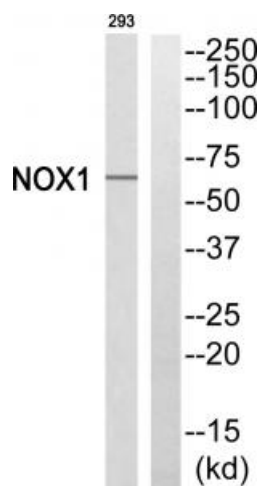
Product data:

Product Type:	Primary Antibodies
Applications:	WB
Recommended Dilution:	WB: 1:500~1:3000, ELISA: 1:3000
Reactivity:	Human, Mouse
Host:	Rabbit
Isotype:	IgG
Clonality:	Polyclonal
Immunogen:	The antiserum was produced against synthesized peptide derived from C-terminal of human NOX1.
Formulation:	Phosphate buffered saline (without Mg ²⁺ and Ca ²⁺), pH 7.4, 150mM NaCl, 0.02% sodium azide and 50% glycerol.
Concentration:	lot specific
Purification:	The antibody was affinity-purified from rabbit antiserum by affinity-chromatography using epitope-specific immunogen.
Conjugation:	Unconjugated
Storage:	Store at -20°C as received.
Stability:	Stable for 12 months from date of receipt.
Gene Name:	NADPH oxidase 1
Database Link:	NP_039248 Entrez Gene 237038 Mouse Entrez Gene 27035 Human Q9Y5S8
Synonyms:	GP91-2; mitogenic oxidase (pyridine nucleotide-dependent superoxide-generating); MOX1; NADPH oxidase 1; NADPH oxidase 1 variant NOH-1L; NADPH oxidase homolog-1; NOH-1; NOH1; OTTHUMP00000023657; OTTHUMP00000023659
Note:	NOX1 antibody detects endogenous levels of total NOX1 protein.
Protein Families:	Druggable Genome, Ion Channels: Other, Transmembrane
Protein Pathways:	Leukocyte transendothelial migration



[View online »](#)

Product images:



Western blot analysis of extracts from 293 cells, using NOX1 antibody. The lane on the right is treated with the synthesized peptide.