

Product datasheet for **TA315348**

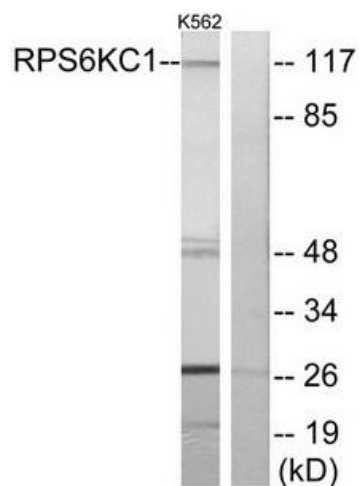
RPS6KC1 Rabbit Polyclonal Antibody

Product data:

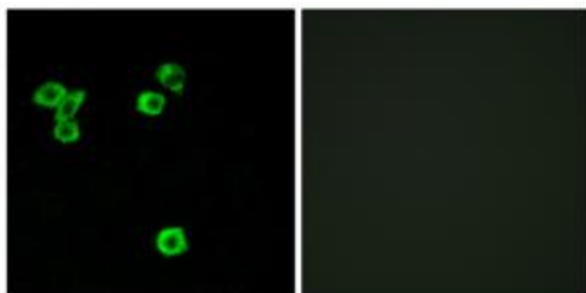
Product Type:	Primary Antibodies
Applications:	IF, WB
Recommended Dilution:	WB: 1:500~1:3000, IF: 1:100~1:500, ELISA: 1:20000
Reactivity:	Human, Mouse
Host:	Rabbit
Isotype:	IgG
Clonality:	Polyclonal
Immunogen:	The antiserum was produced against synthesized peptide derived from internal of human RPS6KC1.
Formulation:	Phosphate buffered saline (without Mg ²⁺ and Ca ²⁺), pH 7.4, 150mM NaCl, 0.02% sodium azide and 50% glycerol.
Concentration:	lot specific
Purification:	The antibody was affinity-purified from rabbit antiserum by affinity-chromatography using epitope-specific immunogen.
Conjugation:	Unconjugated
Storage:	Store at -20°C as received.
Stability:	Stable for 12 months from date of receipt.
Gene Name:	ribosomal protein S6 kinase C1
Database Link:	NP_001129610 Entrez Gene 320119 Mouse Entrez Gene 26750 Human Q96S38
Synonyms:	humS6PKh1; RPK118; RSKL1; S6K-delta-1; S6PKh1
Note:	RPS6KC1 antibody detects endogenous levels of total RPS6KC1 protein.
Protein Families:	Druggable Genome, Protein Kinase



[View online »](#)

Product images:

Western blot analysis of extracts from K562 cells, using RPS6KC1 antibody. The lane on the right is treated with the synthesized peptide.



Immunofluorescence analysis of LOVO cells, using RPS6KC1 antibody. The picture on the right is treated with the synthesized peptide.