

Product datasheet for **TA315335**

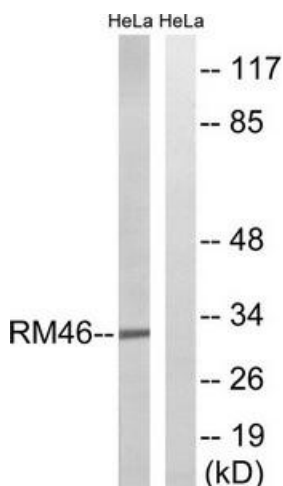
MRPL46 Rabbit Polyclonal Antibody

Product data:

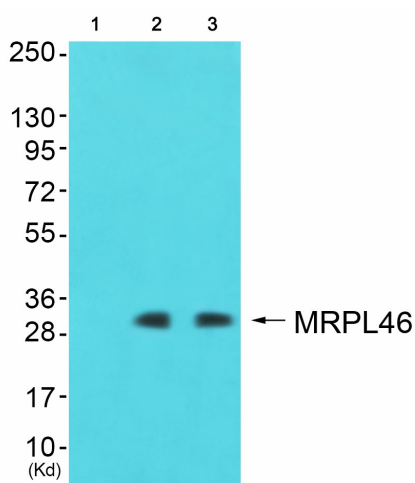
Product Type:	Primary Antibodies
Applications:	IHC, WB
Recommended Dilution:	WB: 1:500~1:3000, IHC: 1:50~1:100, ELISA: 1:40000
Reactivity:	Human, Mouse, Rat
Host:	Rabbit
Isotype:	IgG
Clonality:	Polyclonal
Immunogen:	The antiserum was produced against synthesized peptide derived from internal of human MRPL46.
Formulation:	Phosphate buffered saline (without Mg ²⁺ and Ca ²⁺), pH 7.4, 150mM NaCl, 0.02% sodium azide and 50% glycerol.
Concentration:	lot specific
Purification:	The antibody was affinity-purified from rabbit antiserum by affinity-chromatography using epitope-specific immunogen.
Conjugation:	Unconjugated
Storage:	Store at -20°C as received.
Stability:	Stable for 12 months from date of receipt.
Gene Name:	mitochondrial ribosomal protein L46
Database Link:	NP_071446 Entrez Gene 67308 MouseEntrez Gene 293054 RatEntrez Gene 26589 Human Q9H2W6
Synonyms:	C15orf4; LIECG2; P2ECSL
Note:	MRPL46 antibody detects endogenous levels of total MRPL46 protein.



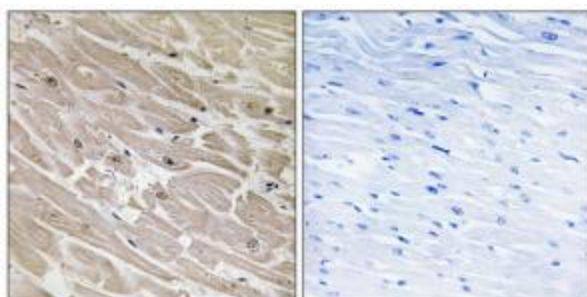
[View online »](#)

Product images:


Western blot analysis of extracts from HeLa cells, using MRPL46 antibody. The lane on the right is treated with the synthesized peptide.



Western blot analysis of extracts from HuvEc cells (Lane 2) and HepG2 cells (Lane 3), using MRPL46 Antibody. The lane on the left is treated with synthesized peptide.



Immunohistochemistry analysis of paraffin-embedded human heart tissue using MRPL46 antibody. The picture on the right is treated with the synthesized peptide.