

Product datasheet for **TA315329**

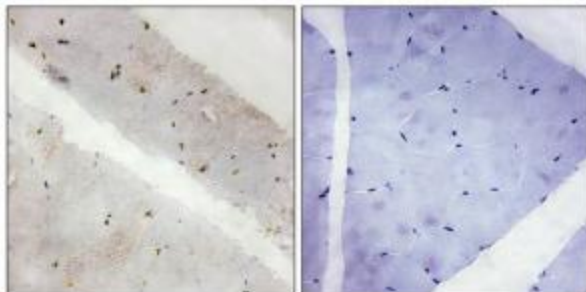
LATS2 Rabbit Polyclonal Antibody

Product data:

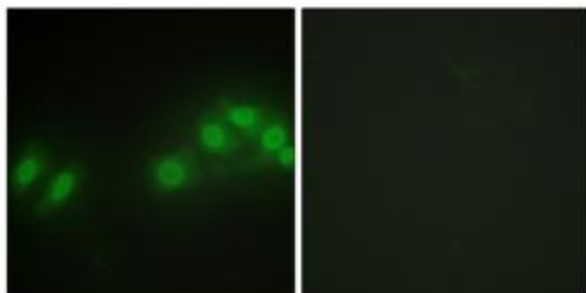
| | |
|-----------------------|--|
| Product Type: | Primary Antibodies |
| Applications: | IF, IHC |
| Recommended Dilution: | IHC: 1:50~1:100, IF: 1:100~1:500, ELISA: 1:20000 |
| Reactivity: | Human, Mouse |
| Host: | Rabbit |
| Isotype: | IgG |
| Clonality: | Polyclonal |
| Immunogen: | The antiserum was produced against synthesized peptide derived from internal of human LATS2. |
| Formulation: | Phosphate buffered saline (without Mg ²⁺ and Ca ²⁺), pH 7.4, 150mM NaCl, 0.02% sodium azide and 50% glycerol. |
| Concentration: | lot specific |
| Purification: | The antibody was affinity-purified from rabbit antiserum by affinity-chromatography using epitope-specific immunogen. |
| Conjugation: | Unconjugated |
| Storage: | Store at -20°C as received. |
| Stability: | Stable for 12 months from date of receipt. |
| Gene Name: | large tumor suppressor kinase 2 |
| Database Link: | NP_055387 Entrez Gene 50523 Mouse Entrez Gene 26524 Human Q9NRM7 |
| Synonyms: | KPM |
| Note: | LATS2 antibody detects endogenous levels of total LATS2 protein. |
| Protein Families: | Druggable Genome, Protein Kinase |



[View online »](#)

Product images:

Immunohistochemistry analysis of paraffin-embedded human skeletal muscle tissue, using LATS2 antibody. The picture on the right is treated with the synthesized peptide.



Immunofluorescence analysis of HepG2 cells, using LATS2 antibody. The picture on the right is treated with the synthesized peptide.