

Product datasheet for **TA315324**

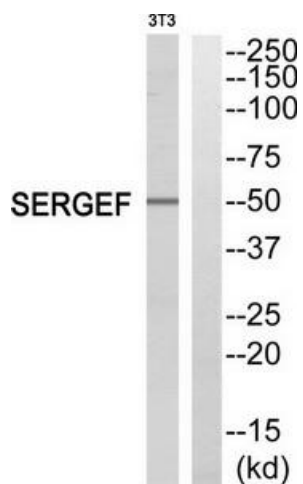
SERGEF Rabbit Polyclonal Antibody

Product data:

Product Type:	Primary Antibodies
Applications:	WB
Recommended Dilution:	WB: 1:500~1:3000, ELISA: 1:20000
Reactivity:	Human
Host:	Rabbit
Isotype:	IgG
Clonality:	Polyclonal
Immunogen:	The antiserum was produced against synthesized peptide derived from internal of human SERGEF.
Formulation:	Phosphate buffered saline (without Mg ²⁺ and Ca ²⁺), pH 7.4, 150mM NaCl, 0.02% sodium azide and 50% glycerol.
Concentration:	lot specific
Purification:	The antibody was affinity-purified from rabbit antiserum by affinity-chromatography using epitope-specific immunogen.
Conjugation:	Unconjugated
Storage:	Store at -20°C as received.
Stability:	Stable for 12 months from date of receipt.
Gene Name:	secretion regulating guanine nucleotide exchange factor
Database Link:	NP_036271 Entrez Gene 26297 Human Q9UGK8
Synonyms:	DELGEF; Gnefr
Note:	SERGEF antibody detects endogenous levels of total SERGEF protein.

[View online »](#)

Product images:



Western blot analysis of extracts from NIH/3T3 cells, using SERGEF antibody. The lane on the right is treated with the synthesized peptide.