

## Product datasheet for **TA315321**

### Tin2 (TNF2) Rabbit Polyclonal Antibody

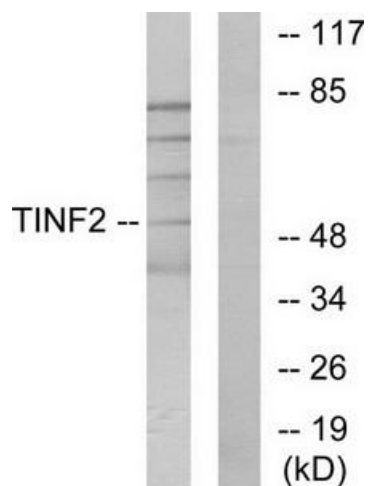
#### Product data:

Product Type:	Primary Antibodies
Applications:	WB
Recommended Dilution:	WB: 1:500~1:3000, ELISA: 1:10000
Reactivity:	Human
Host:	Rabbit
Isotype:	IgG
Clonality:	Polyclonal
Immunogen:	The antiserum was produced against synthesized peptide derived from internal of human TNF2.
Formulation:	Phosphate buffered saline (without Mg <sup>2+</sup> and Ca <sup>2+</sup> ), pH 7.4, 150mM NaCl, 0.02% sodium azide and 50% glycerol.
Concentration:	lot specific
Purification:	The antibody was affinity-purified from rabbit antiserum by affinity-chromatography using epitope-specific immunogen.
Conjugation:	Unconjugated
Storage:	Store at -20°C as received.
Stability:	Stable for 12 months from date of receipt.
Gene Name:	TERF1 interacting nuclear factor 2
Database Link:	<a href="#">NP_001092744</a> <a href="#">Entrez Gene 26277 Human</a> <a href="#">Q9BSI4</a>
Synonyms:	DKCA3; TIN2
Note:	TNF2 antibody detects endogenous levels of total TNF2 protein.

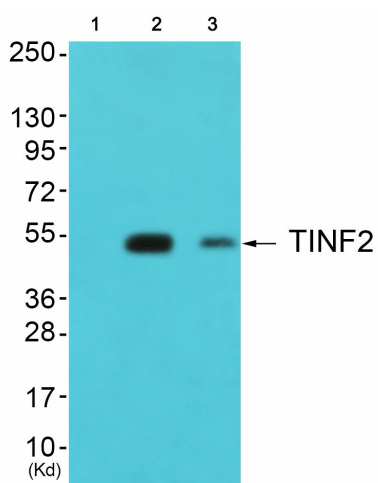


[View online »](#)

Product images:



Western blot analysis of extracts from HUVEC cells, using TNF2 antibody. The lane on the right is treated with the synthesized peptide.



Western blot analysis of extracts from colo cells (Lane 2) and 293 cells (Lane 3), using TNF2 Antibody. The lane on the left is treated with synthesized peptide.