

Product datasheet for **TA315317**

KLHL3 Rabbit Polyclonal Antibody

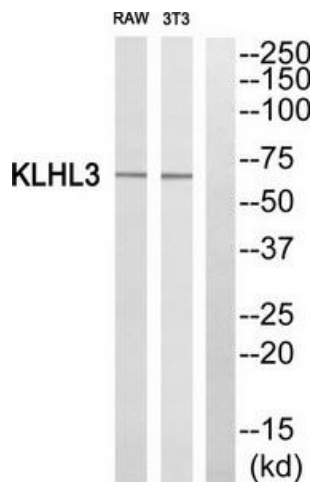
Product data:

Product Type:	Primary Antibodies
Applications:	IF, IHC, WB
Recommended Dilution:	WB: 1:500~1:3000, IHC: 1:50~1:100, IF: 1:100~1:500, ELISA: 1:20000
Reactivity:	Human
Host:	Rabbit
Isotype:	IgG
Clonality:	Polyclonal
Immunogen:	The antiserum was produced against synthesized peptide derived from N-terminal of human KLHL3.
Formulation:	Phosphate buffered saline (without Mg ²⁺ and Ca ²⁺), pH 7.4, 150mM NaCl, 0.02% sodium azide and 50% glycerol.
Concentration:	lot specific
Purification:	The antibody was affinity-purified from rabbit antiserum by affinity-chromatography using epitope-specific immunogen.
Conjugation:	Unconjugated
Storage:	Store at -20°C as received.
Stability:	Stable for 12 months from date of receipt.
Gene Name:	kelch like family member 3
Database Link:	NP_059111 Entrez Gene 26249 Human Q9UH77
Synonyms:	PHA2D
Note:	KLHL3 antibody detects endogenous levels of total KLHL3 protein.

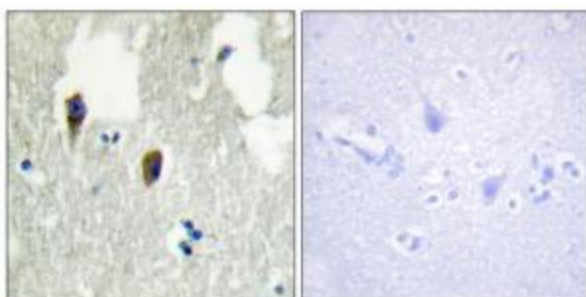


[View online »](#)

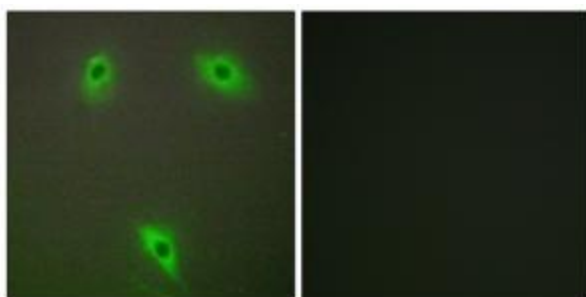
Product images:



Western blot analysis of extracts from RAW264.7 cells and 3T3 cells, using KLHL3 antibody. The lane on the right is treated with the synthesized peptide.



Immunohistochemistry analysis of paraffin-embedded human brain tissue, using KLHL3 antibody. The picture on the right is treated with the synthesized peptide.



Immunofluorescence analysis of A549 cells, using KLHL3 antibody. The picture on the right is treated with the synthesized peptide.