

Product datasheet for **TA315314**

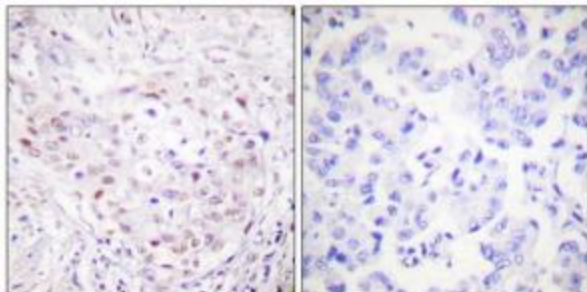
SENP3 Rabbit Polyclonal Antibody

Product data:

Product Type:	Primary Antibodies
Applications:	IHC
Recommended Dilution:	WB: 1:500~1:3000, IHC: 1:50~1:100, ELISA: 1:10000
Reactivity:	Human, Mouse
Host:	Rabbit
Isotype:	IgG
Clonality:	Polyclonal
Immunogen:	The antiserum was produced against synthesized peptide derived from Internal of human SENP3.
Formulation:	Phosphate buffered saline (without Mg ²⁺ and Ca ²⁺), pH 7.4, 150mM NaCl, 0.02% sodium azide and 50% glycerol.
Concentration:	lot specific
Purification:	The antibody was affinity-purified from rabbit antiserum by affinity-chromatography using epitope-specific immunogen.
Conjugation:	Unconjugated
Storage:	Store at -20°C as received.
Stability:	Stable for 12 months from date of receipt.
Gene Name:	SUMO1/sentrin/SMT3 specific peptidase 3
Database Link:	NP_056485 Entrez Gene 80886 Mouse Entrez Gene 26168 Human Q9H4L4
Synonyms:	SMT3IP1; SSP3; Ulp1
Note:	SENP3 antibody detects endogenous levels of total SENP3 protein.
Protein Families:	Druggable Genome, Protease



[View online »](#)

Product images:

Immunohistochemistry analysis of paraffin-embedded human breast carcinoma tissue, using SENP3 antibody. The picture on the right is treated with the synthesized peptide.