

Product datasheet for **TA315312**

GIMAP2 Rabbit Polyclonal Antibody

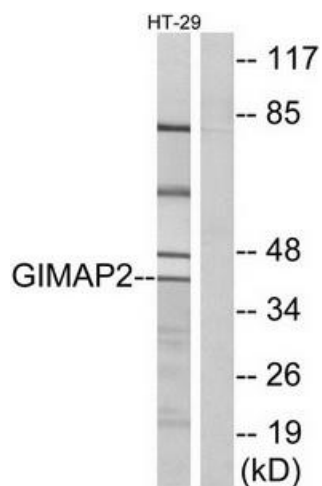
Product data:

Product Type:	Primary Antibodies
Applications:	IF, WB
Recommended Dilution:	WB: 1:500~1:3000, IF: 1:100~1:500, ELISA: 1:20000
Reactivity:	Human
Host:	Rabbit
Isotype:	IgG
Clonality:	Polyclonal
Immunogen:	The antiserum was produced against synthesized peptide derived from internal of human GIMAP2.
Formulation:	Phosphate buffered saline (without Mg ²⁺ and Ca ²⁺), pH 7.4, 150mM NaCl, 0.02% sodium azide and 50% glycerol.
Concentration:	lot specific
Purification:	The antibody was affinity-purified from rabbit antiserum by affinity-chromatography using epitope-specific immunogen.
Conjugation:	Unconjugated
Storage:	Store at -20°C as received.
Stability:	Stable for 12 months from date of receipt.
Gene Name:	GTPase, IMAP family member 2
Database Link:	NP_056475 Entrez Gene 26157 Human Q9UG22
Synonyms:	HIMAP2; IAN12; IMAP2
Note:	GIMAP2 antibody detects endogenous levels of total GIMAP2 protein.
Protein Families:	Transmembrane

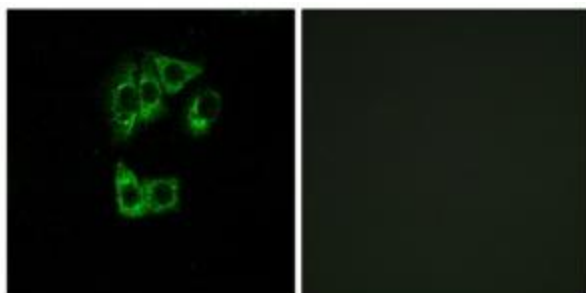


[View online »](#)

Product images:



Western blot analysis of extracts from HT-29 cells, using GIMAP2 antibody. The lane on the right is treated with the synthesized peptide.



Immunofluorescence analysis of A549 cells, using GIMAP2 antibody. The picture on the right is treated with the synthesized peptide.