

Product datasheet for **TA315301**

GORASP2 Rabbit Polyclonal Antibody

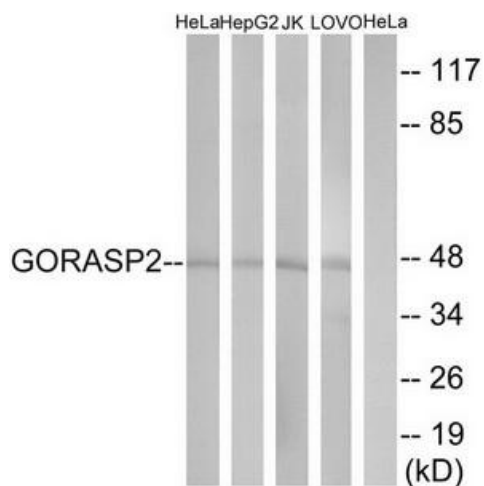
Product data:

Product Type:	Primary Antibodies
Applications:	WB
Recommended Dilution:	WB: 1:500~1:3000, ELISA: 1:40000
Reactivity:	Human, Mouse, Rat
Host:	Rabbit
Isotype:	IgG
Clonality:	Polyclonal
Immunogen:	The antiserum was produced against synthesized peptide derived from internal of human GORASP2.
Formulation:	Phosphate buffered saline (without Mg ²⁺ and Ca ²⁺), pH 7.4, 150mM NaCl, 0.02% sodium azide and 50% glycerol.
Concentration:	lot specific
Purification:	The antibody was affinity-purified from rabbit antiserum by affinity-chromatography using epitope-specific immunogen.
Conjugation:	Unconjugated
Storage:	Store at -20°C as received.
Stability:	Stable for 12 months from date of receipt.
Gene Name:	golgi reassembly stacking protein 2
Database Link:	NP_056345 Entrez Gene 70231 MouseEntrez Gene 113961 RatEntrez Gene 26003 Human Q9H8Y8
Synonyms:	GOLPH6; GRASP55; GRS2; p59
Note:	GORASP2 antibody detects endogenous levels of total GORASP2 protein.
Protein Families:	Druggable Genome



[View online »](#)

Product images:



Western blot analysis of extracts from HeLa cells, HepG2 cells, Jurkat cells and LOVO cells, using GORASP2 antibody. The lane on the right is treated with the synthesized peptide.