

## Product datasheet for **TA315300**

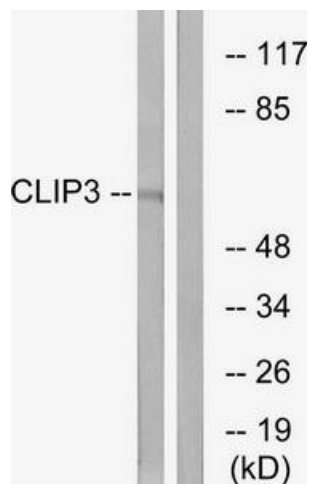
### CLIP3 Rabbit Polyclonal Antibody

#### Product data:

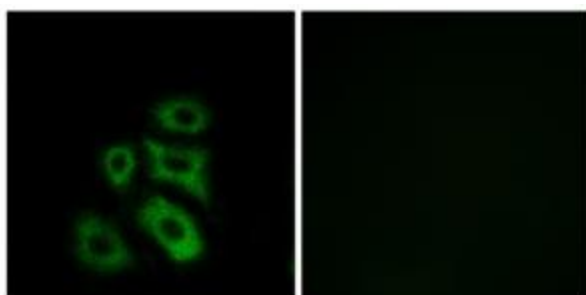
Product Type:	Primary Antibodies
Applications:	IF, WB
Recommended Dilution:	WB: 1:500~1:3000, IF: 1:100~1:500, ELISA: 1:40000
Reactivity:	Human, Mouse
Host:	Rabbit
Isotype:	IgG
Clonality:	Polyclonal
Immunogen:	The antiserum was produced against synthesized peptide derived from internal of human CLIP3.
Formulation:	Phosphate buffered saline (without Mg <sup>2+</sup> and Ca <sup>2+</sup> ), pH 7.4, 150mM NaCl, 0.02% sodium azide and 50% glycerol.
Concentration:	lot specific
Purification:	The antibody was affinity-purified from rabbit antiserum by affinity-chromatography using epitope-specific immunogen.
Conjugation:	Unconjugated
Storage:	Store at -20°C as received.
Stability:	Stable for 12 months from date of receipt.
Gene Name:	CAP-Gly domain containing linker protein 3
Database Link:	<a href="#">NP_056341</a> <a href="#">Entrez Gene 76686 Mouse</a> <a href="#">Entrez Gene 25999 Human</a> <a href="#">Q96DZ5</a>
Synonyms:	CLIPR-59; CLIPR59; RSNL1
Note:	CLIP3 antibody detects endogenous levels of total CLIP3 protein.



[View online »](#)

**Product images:**

Western blot analysis of extracts from A549 cells, using CLIP3 antibody. The lane on the right is treated with the synthesized peptide.



Immunofluorescence analysis of A549 cells, using CLIP3 antibody. The picture on the right is treated with the synthesized peptide.