

Product datasheet for **TA315298**

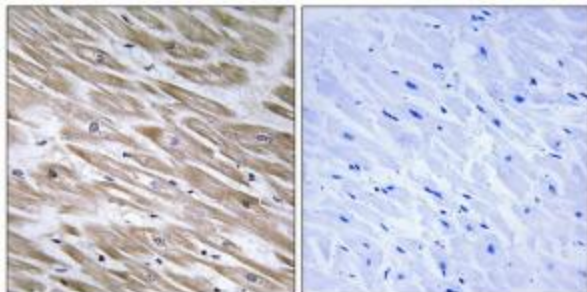
ANKRD25 (KANK2) Rabbit Polyclonal Antibody

Product data:

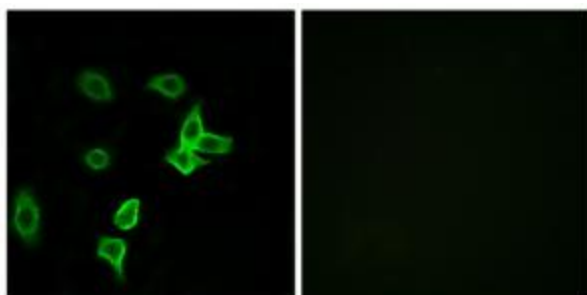
Product Type:	Primary Antibodies
Applications:	IF, IHC
Recommended Dilution:	IHC: 1:50~1:100, IF: 1:100~1:500, ELISA: 1:40000
Reactivity:	Human
Host:	Rabbit
Isotype:	IgG
Clonality:	Polyclonal
Immunogen:	The antiserum was produced against synthesized peptide derived from internal of human KANK2.
Formulation:	Phosphate buffered saline (without Mg ²⁺ and Ca ²⁺), pH 7.4, 150mM NaCl, 0.02% sodium azide and 50% glycerol.
Concentration:	lot specific
Purification:	The antibody was affinity-purified from rabbit antiserum by affinity-chromatography using epitope-specific immunogen.
Conjugation:	Unconjugated
Storage:	Store at -20°C as received.
Stability:	Stable for 12 months from date of receipt.
Gene Name:	KN motif and ankyrin repeat domains 2
Database Link:	NP_056308 Entrez Gene 25959 Human Q63ZY3
Synonyms:	ANKRD25; MXRA3; PPKWH; SIP
Note:	KANK2 antibody detects endogenous levels of total KANK2 protein.



[View online »](#)

Product images:

Immunohistochemistry analysis of paraffin-embedded human heart tissue using KANK2 antibody. The picture on the right is treated with the synthesized peptide.



Immunofluorescence analysis of A549 cells, using KANK2 antibody. The picture on the right is treated with the synthesized peptide.