

Product datasheet for **TA315292**

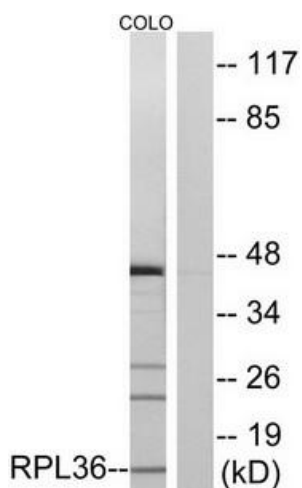
RPL36 Rabbit Polyclonal Antibody

Product data:

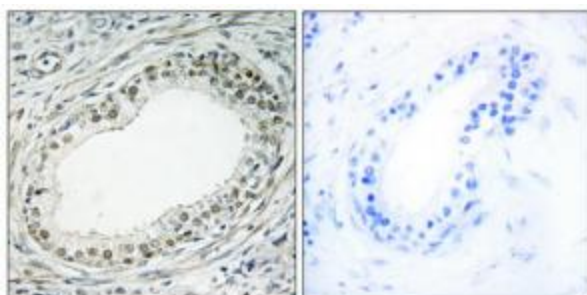
Product Type:	Primary Antibodies
Applications:	IF, IHC, WB
Recommended Dilution:	WB: 1:500~1:3000, IHC: 1:50~1:100, IF: 1:100~1:500, ELISA: 1:40000
Reactivity:	Human, Mouse, Rat
Host:	Rabbit
Isotype:	IgG
Clonality:	Polyclonal
Immunogen:	The antiserum was produced against synthesized peptide derived from internal of human RPL36.
Formulation:	Phosphate buffered saline (without Mg ²⁺ and Ca ²⁺), pH 7.4, 150mM NaCl, 0.02% sodium azide and 50% glycerol.
Purification:	The antibody was affinity-purified from rabbit antiserum by affinity-chromatography using epitope-specific immunogen.
Conjugation:	Unconjugated
Storage:	Store at -20°C as received.
Stability:	Stable for 12 months from date of receipt.
Gene Name:	ribosomal protein L36
Database Link:	NP_056229 Entrez Gene 54217 Mouse Entrez Gene 58927 Rat Entrez Gene 25873 Human Q9Y3U8
Synonyms:	L36
Note:	RPL36 antibody detects endogenous levels of total RPL36 protein.
Protein Families:	Druggable Genome
Protein Pathways:	Ribosome



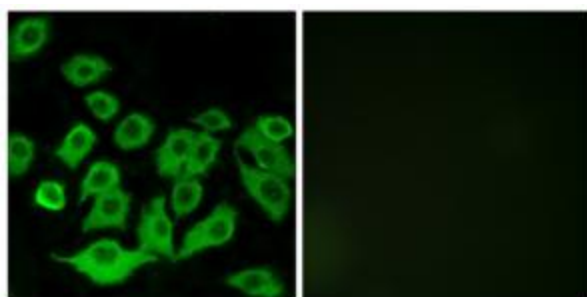
[View online »](#)

Product images:

Western blot analysis of extracts from COLO cells, using RPL36 antibody. The lane on the right is treated with the synthesized peptide.



Immunohistochemistry analysis of paraffin-embedded human prostate carcinoma tissue using RPL36 antibody. The picture on the right is treated with the synthesized peptide.



Immunofluorescence analysis of A549 cells, using RPL36 antibody. The picture on the right is treated with the synthesized peptide.